



Medowie Christian School, Waropara Road, Medowie Proposed New Building

Traffic and Transport Impact Assessment

Ref: 18173
Date: October 2018
Issue: Rev A

Table of Contents

| | | |
|------------|--|-----------|
| 1.0 | INTRODUCTION | 2 |
| 2.0 | PROPOSED DEVELOPMENT | 3 |
| 2.1 | Site, Context and Existing Use | 3 |
| 2.2 | Proposed Development | 4 |
| 3.1 | Road Network..... | 5 |
| 3.2 | Traffic Controls | 5 |
| 3.3 | Traffic Conditions | 6 |
| 3.4 | Transport Services | 6 |
| 4.0 | PARKING | 7 |
| 4.1 | Car Parking | 7 |
| 5.0 | ACCESS, PARKING, INTERNAL CIRCULATION AND SERVICING . | 8 |
| 5.1 | Access..... | 8 |
| 5.2 | Parking and Internal Circulation | 8 |
| 5.3 | Servicing | 8 |
| 6.0 | TRAFFIC IMPLICATIONS..... | 9 |
| 7.0 | CONCLUSION | 10 |

List of Figures

- Figure 1 Location
- Figure 2 Site
- Figure 3 Road Network
- Figure 4 Traffic Controls

List of Appendices

- Appendix A Plans of Existing
- Appendix B Development Plans
- Appendix C Public Transport Services

1.0 Introduction

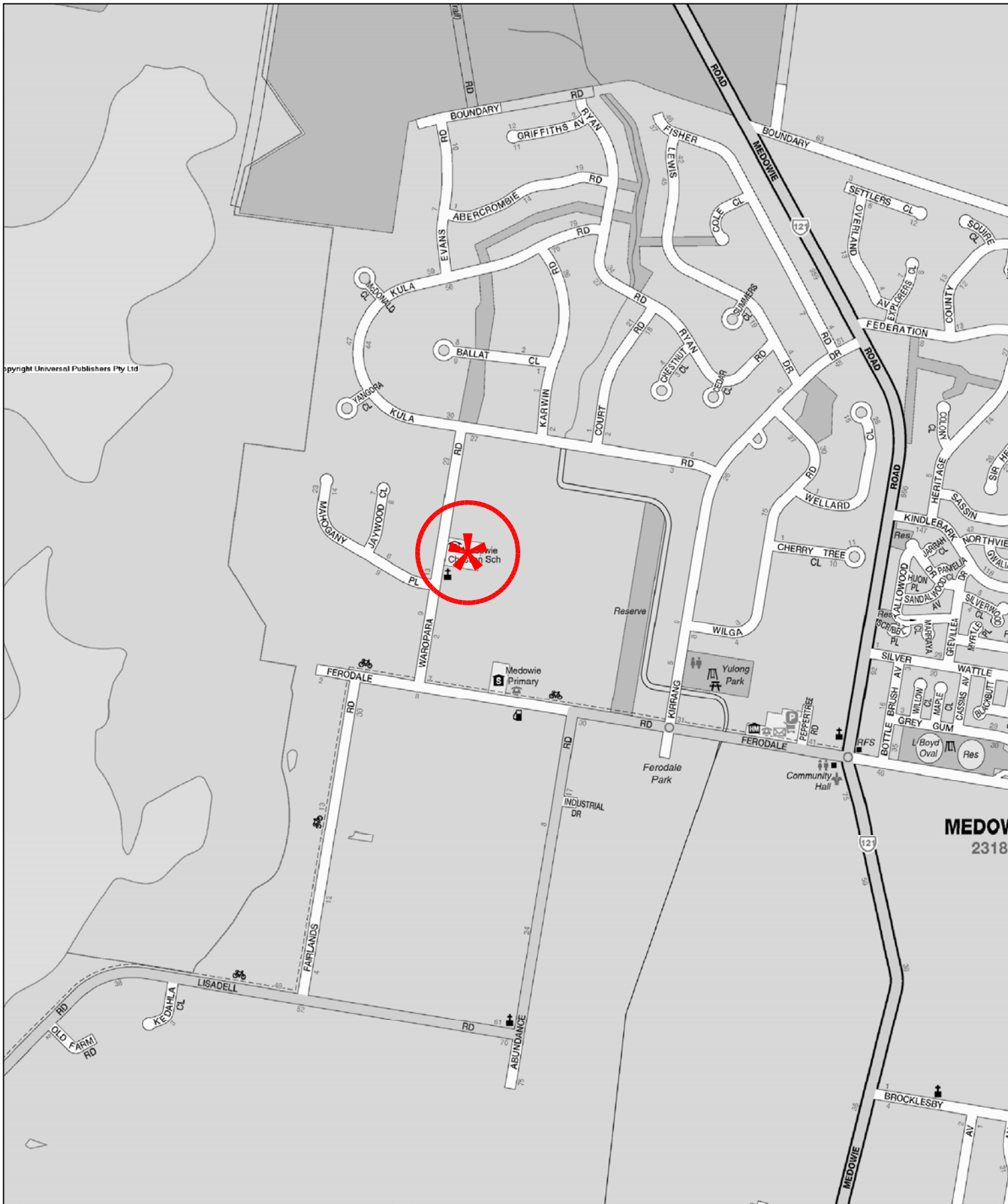
This report has been prepared to accompany a Development Application to Port Stephens Council for a proposed new building at Medowie Christian School (MCS) in Waropara Road at Medowie (Figure 1).

The existing MCS currently accommodates 445 Kindergarten to Year 12 students and 62 staff in permanent and demountable buildings. The school is undertaking a staged upgrade including replacement of the demountable buildings to better provide for the needs of the existing school/students.

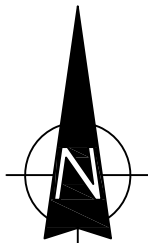
The Development Application proposes to demolish an existing single level building and construct a new 3-level classroom building. This will enable the removal of some existing demountable buildings while not increasing the current student enrolment or staffing.

The purpose of this report is to:

- ❖ describe the site, the existing circumstances and the proposed development scheme
- ❖ describe the existing road system serving the site and traffic conditions on that system
- ❖ assess the adequacy of the parking provision and set down/pick up facility
- ❖ assess the potential traffic implications
- ❖ assess the suitability of the proposed vehicle access, internal circulation and servicing arrangements



LEGEND



LOCATION

FIG 1

2.0 Proposed Development

2.1 Site, Context and Existing Use

The school (Figure 2) is located on Lot 22 in DP 1036306 which occupies a large rectangular shaped area extending to the west of Medowie Road. The existing Medowie Christian School consists of a number of blocks and demountable buildings around a large hall with a frontage administration building and also contains a basketball court, cricket nets and vegetable gardens. There are separate ingress and egress driveways on Waropara Road with frontage carpark and bus standing areas.

The school currently accommodates 445 Kindergarten to Year 12 students with 62 staff (34 being full-time while 28 being part-time staff) with the part-time staff working the following days:

- ❖ 10 staff working 1 or 2 days a week
- ❖ 14 staff working 3 or 3.5 days per week
- ❖ 4 staff working 4 days per week

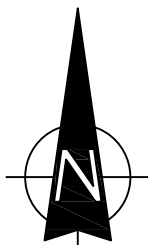
With the above working arrangement, the school employs a total of 50 full-time equivalents (FTE) staff.

The school currently has 56 parking spaces for staff and visitor use with the following breakdown:

- ❖ 2 disabled spaces near the reception area
- ❖ 5 spaces near the reception area
- ❖ 13 on church fence side in the reception area
- ❖ 10 spaces on Waropara Road frontage



LEGEND



SITE

FIG 1

Transport and Traffic Planning Associates

- ❖ 16 staff spaces on northern site frontage
- ❖ 10 staff spaces on the grass side

By agreement with the adjoining Church allows the School to use part of the car park area on the Church site for a set down/pick up facility. The Year 12 students are also currently utilising the car park area on the Church site. There is a small Medical Centre as well as a number of buildings on the Church site with 52 parking spaces while other surrounding land uses comprise rural residential dwellings and the Medowie residential area and shops which are located further to the east.

Details of the existing school are provided on the plan prepared by SHAC provided in Appendix A.

2.2 Proposed Development

It is proposed to demolish the existing single level “Block 5” building on the western side of the Administration building and remove the adjacent demountables. A new 3-level building will be constructed in place of the existing building which will also enable other demountables at the rear to be removed.

The new building will provide classrooms to accommodate existing students and will not provide capacity for any additional students or need for additional staff.

Details of the proposed development scheme are provided on the architectural plans prepared by SHAC which also accompany the Development Application and are reproduced in part in Appendix B.

3.0 Road Network, Traffic Conditions & Transport

3.1 Road Network

The road network serving the site (Figure 3) comprises:

- ❖ Pacific Highway – a State Road and an arterial route linking between Newcastle
- ❖ Medowie Road – a sub-arterial route linking between Pacific Highway and Williamtown
- ❖ Richardson Road / Grahamstown Road / Lisadell Road / Abundance Road / Ferodale Road – an east-west collector road linking between Ferodale and Medowie
- ❖ Waropara Road – a local access road connecting between Ferodale Road and Kula Road

Waropara Road is relatively straight and level with a 7-metre-wide pavement within a 20-metre-wide reserve generally with no paved footway except on the site frontage.

3.2 Traffic Controls

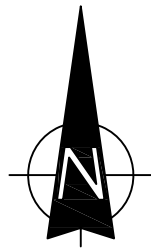
The limited existing traffic controls (Figure 4) on the road system serving the area include:

- ❖ the roundabout controls along Ferodale Road at the intersections with Kirrang Drive and Medowie Road
- ❖ the roundabout controls along Medowie Road at the intersections with Kirrang Drive and Federation Drive
- ❖ the 50 kmph speed limit on the local roads with 40 kmph SCHOOL ZONE restrictions in Waropara Avenue near Medowie Christian Schools and on Ferodale Road near Medowie Primary School



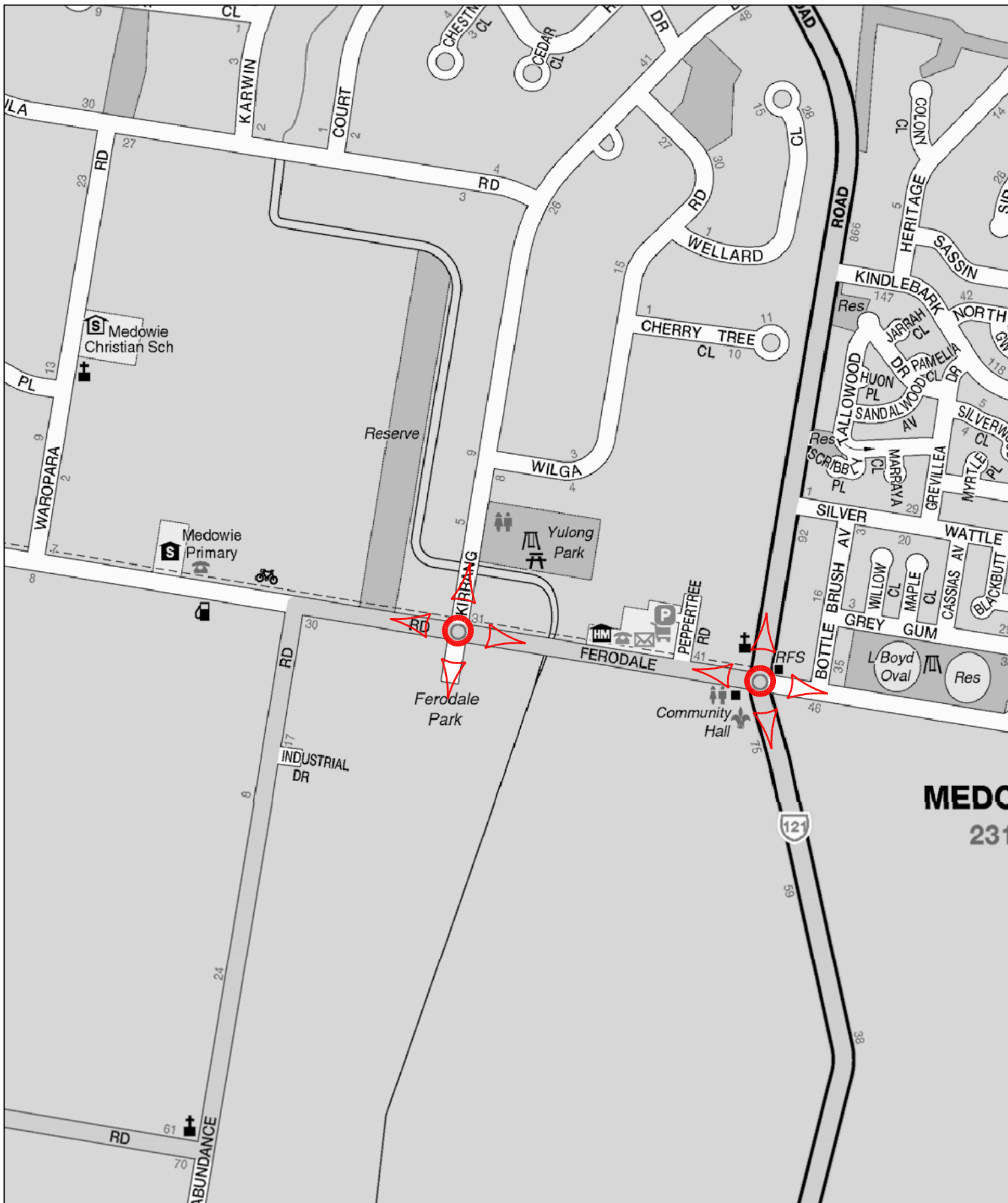
LEGEND

- ARTERIAL
- SUB-ARTERIAL
- - - - - COLLECTOR





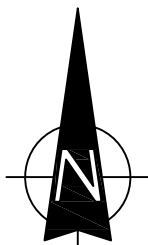
ROAD NETWORK

FIG 3



LEGEND

-  TRAFFIC SIGNAL CONTROL
-  ROUNDABOUT



TRAFFIC CONTROLS

FIG 4

3.3 Traffic Conditions

Waropara Road is a local access road with traffic movements largely limited to that generated by the frontage uses and that of the immediate adjoining roads. The existing traffic movements along Waropara Road during the peak school arrival/departure times are as follows:

| | AM (8.00 – 9.00) | PM (2.30 – 3.30) |
|------------|-------------------------|-------------------------|
| Northbound | 117 | 95 |
| Southbound | 128 | 109 |

The existing school contributes to much of these movements along with that of Medowie Primary School located on Ferodale Road. Observations reveal that drivers (including bus drivers) have no difficulty in entering and exiting the school site and the SD/PU facility on the adjacent site where the majority of movements occur.

Buses access the site in the morning arrival and afternoon departure periods and approximately 57% of school children travel by bus. There is a relatively low travel mode by bicycle at the present time (average of 5 per day) and this in part reflects the absence of paved footways (except on the school frontage) or on-road bicycle facilities.

3.4 Transport Services

Public transport services in the vicinity of the site are provided by:

- ❖ Route 136-138 – a Hunter Valley bus service providing a connection between Stockton Wharf and Raymond Terrace Transport Interchange further to the west.

Details of bus services and routes are provided on the bus route maps and timetable in Appendix C.

4.0 Parking

4.1 Car Parking

Council's DCP 2013 Section B3 specifies parking requirement in relation to Education Establishments as follows:

| | | |
|---|---|------------------------|
| Staff | - | 1 space per staff |
| Senior Students (Year 12) | - | 1 space per 8 students |
| Adequate Set Down and Pick Up (SD/PU) provision including Bus Bay | | |

Given that the part-time staff only works 1 to 4 days a week, it is considered appropriate to apply the above parking requirement to the 50 FTE staff only. Application of the above criteria to the existing school would indicate the following parking provision:

| | | |
|------------------------------|---|------------------|
| 50 staff | - | 50 spaces |
| 19 senior students (Year 12) | | 3 spaces |
| Total | - | 53 spaces |

The existing car parking arrangement of 56 parking spaces within the school campus will be retained for the staff and visitor use. The overprovision of car parking spaces is appropriate to accommodate any change to the part-time staffing requirement.

In addition to these spaces, the development proposes 3 car parking spaces to accommodate the Year 12 students. The school will also maintain the existing 4 bus bays and use of a section of the car park on Lot 1 for a set down/pick up facility.

It is apparent that the proposed car parking provision complies with that required by the DCP criteria and the school's staffing requirement as well as the day to day parking and set-down/pick-up needs.

5.0 Access, Parking, Internal Circulation and Servicing

5.1 Access

The existing vehicle access arrangements for the school and the Church involve 4 separate entry and exit driveways which comply with the design requirements of AS2890.1. These accesses are located where adequate sight lines are available on a relatively straight and level section of roadway.

It is proposed to retain the existing access arrangements, which accommodate all vehicles requiring access to the site, with the alterations and additions to the school.

5.2 Parking and Internal Circulation

The design of the existing car parking and internal circulation arrangements accord with the criteria contained in AS2890.1, 2 and 6. The carpark located opposite of the Bus Bay is reserved for staff members in order to minimise potential traffic conflict during set down and pick up periods.

The new car parking spaces have also been designed to accord with AS 2890.1.

5.3 Servicing

The existing servicing arrangement involves a weekly skip bin collection as well as cleaning and maintenance activities which occur outside of school hours and the current arrangements are satisfactory. The management of these servicing arrangements is subject to the School Board annual review to ensure their adequacy and appropriateness of the arrangements.

6.0 Traffic Implications

Because there will be no increase to the existing student and staff numbers as a result of the proposed alterations and additions, the existing satisfactory traffic circumstances will not change. There will be some additional traffic movements during the construction process, however these movements (largely workers) will occur before and after the peak school activity movements.

7.0 Conclusion

The traffic, transport and parking assessment provided in this report indicate that the new building for Medowie Christian School will:

- ❖ not present any unsatisfactory capacity, safety or environmental related traffic implications
- ❖ incorporate a suitable and appropriate parking provision
- ❖ retain the existing satisfactory vehicle access, internal circulation and servicing arrangements

Appendix A

Plans of Existing



Drawing and design © SHAC Pty Ltd 2016. The signed control copy of this drawing is held by SHAC Pty Ltd. | Ref: P-380003846 Medowie Christian School 520 DA3846 520.03 Medowie Christian pin date: 10-Jul-18 time: 12:10 PM



DA SUBMISSION

1. Dimensions are in millimeters unless otherwise shown.
2. Work to given dimensions. Do not scale from drawing.
3. Check all dimensions on site prior to construction and fabrication.
4. Bring any discrepancies to the attention of the proprietor & architect.

SCHOOL DETAILS






Site Address: 6B Waropara Road, Medowie, 2318
Lot / DP Address: Lot 2 DP1036306
Site Area: **Total - 40,500m² (4.05 h.a.)**
Developable - 24,000m² (2.4 h.a.)

Council: Port Stephens LGA
Zoning: R5 - Large Lot Residential

ANALYTICAL SUMMARY

Student Numbers: Primary 260
Secondary 200
Staff Number: 59
Existing Carparks: 50
Carparks on Church site: 47

LEGEND

-  SUBJECT SITE
-  MAJOR MEDOWIE AREAS
-  ROAD ACCESS
-  UNUSABLE SITE AREA
-  EXISTING BUILDING



Appendix B

Development Plans



DA SUBMISSION

Medowie Christian School

A new Senior Science and Technology Building on an existing school site.

REVISION B



SITE

Waropara Road, Medowie
NSW

CLIENT

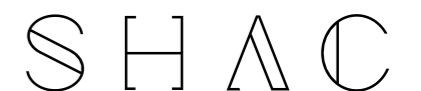
Medowie Christian School

DATE

20.09.18

PROJECT NO.

3846

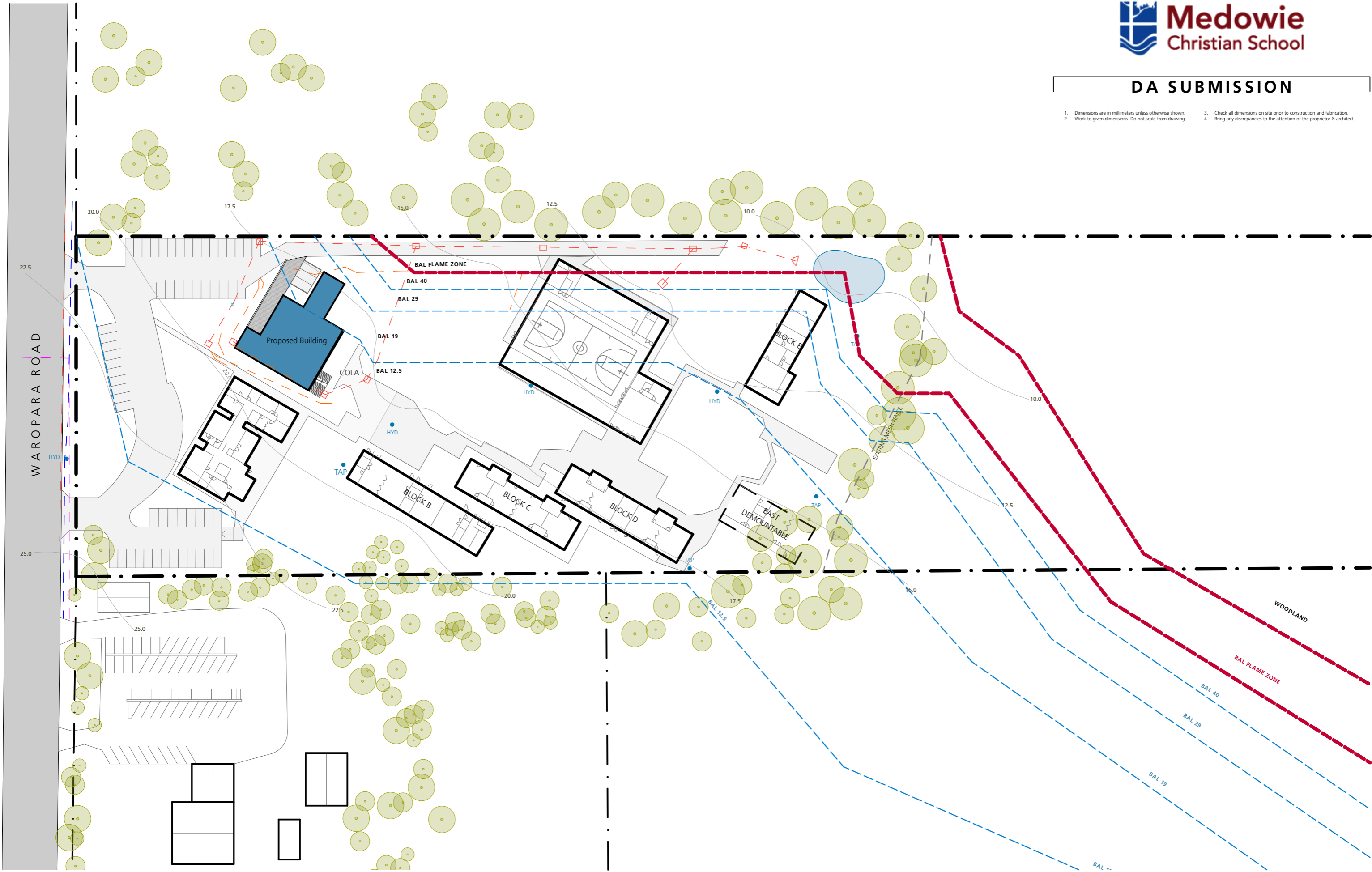


DA SUBMISSION

1. Dimensions are in millimeters unless otherwise shown.

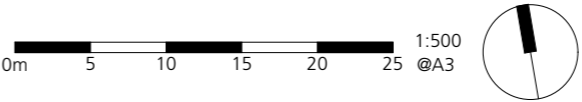
2. Work to given dimensions. Do not scale from drawing.
3. Check all dimensions on site prior to construction and fabrication.

4. Bring any discrepancies to the attention of the proprietor & architect.



3846
DA1101
RevC 20.09.18

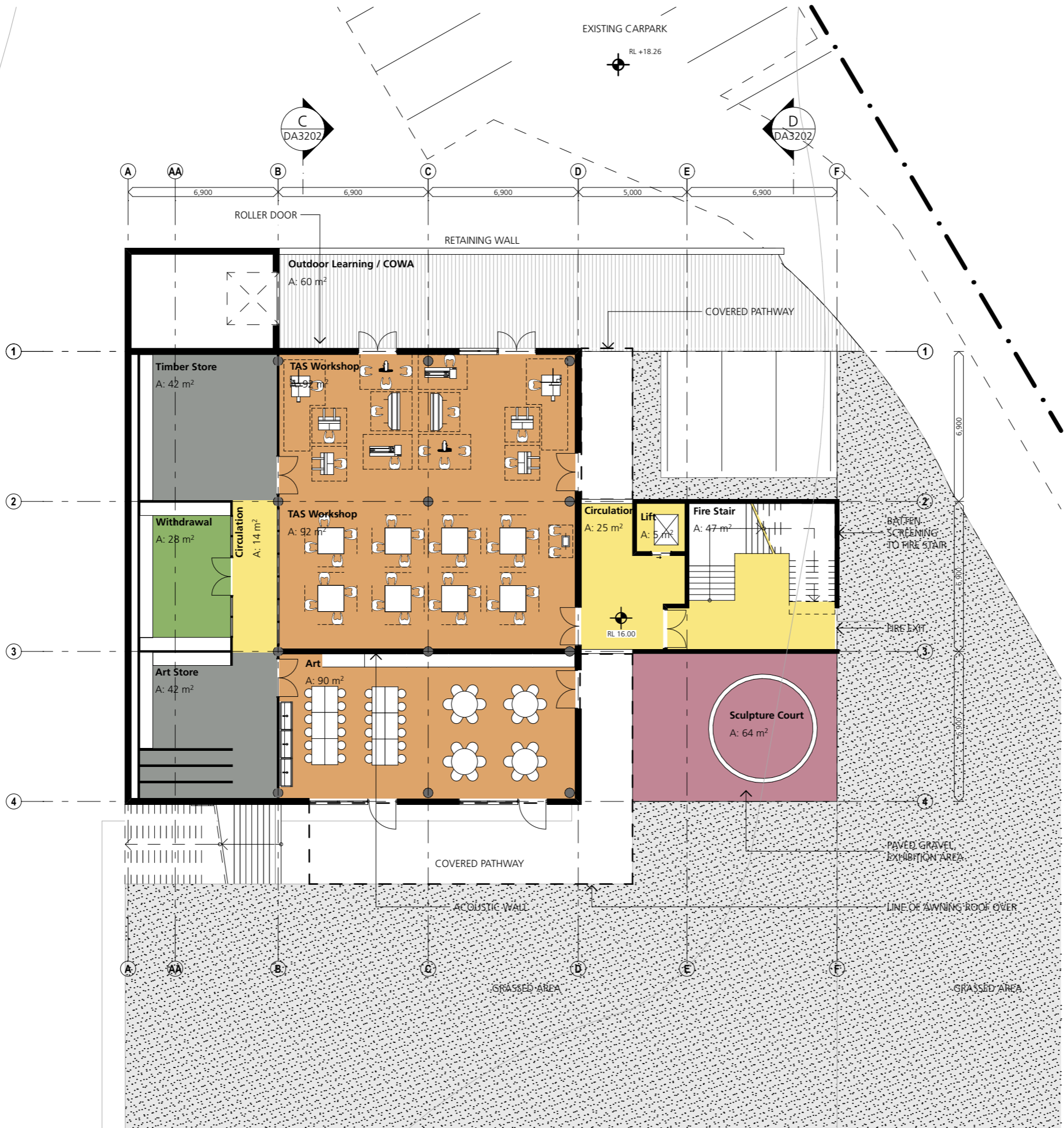
Proposed Site Plan
Medowie Christian School
Waropara Road, Medowie



SHAC
Nominated Architect Justin Hamilton (6160) | ABN 32 131 584 846

DA SUBMISSION

1. Dimensions are in millimeters unless otherwise shown.
2. Work to given dimensions. Do not scale from drawing.
3. Check all dimensions on site prior to construction and fabrication.
4. Bring any discrepancies to the attention of the proprietor & architect.



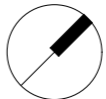
3846
DA2101

RevF 20.09.18

Ground Floor Plan

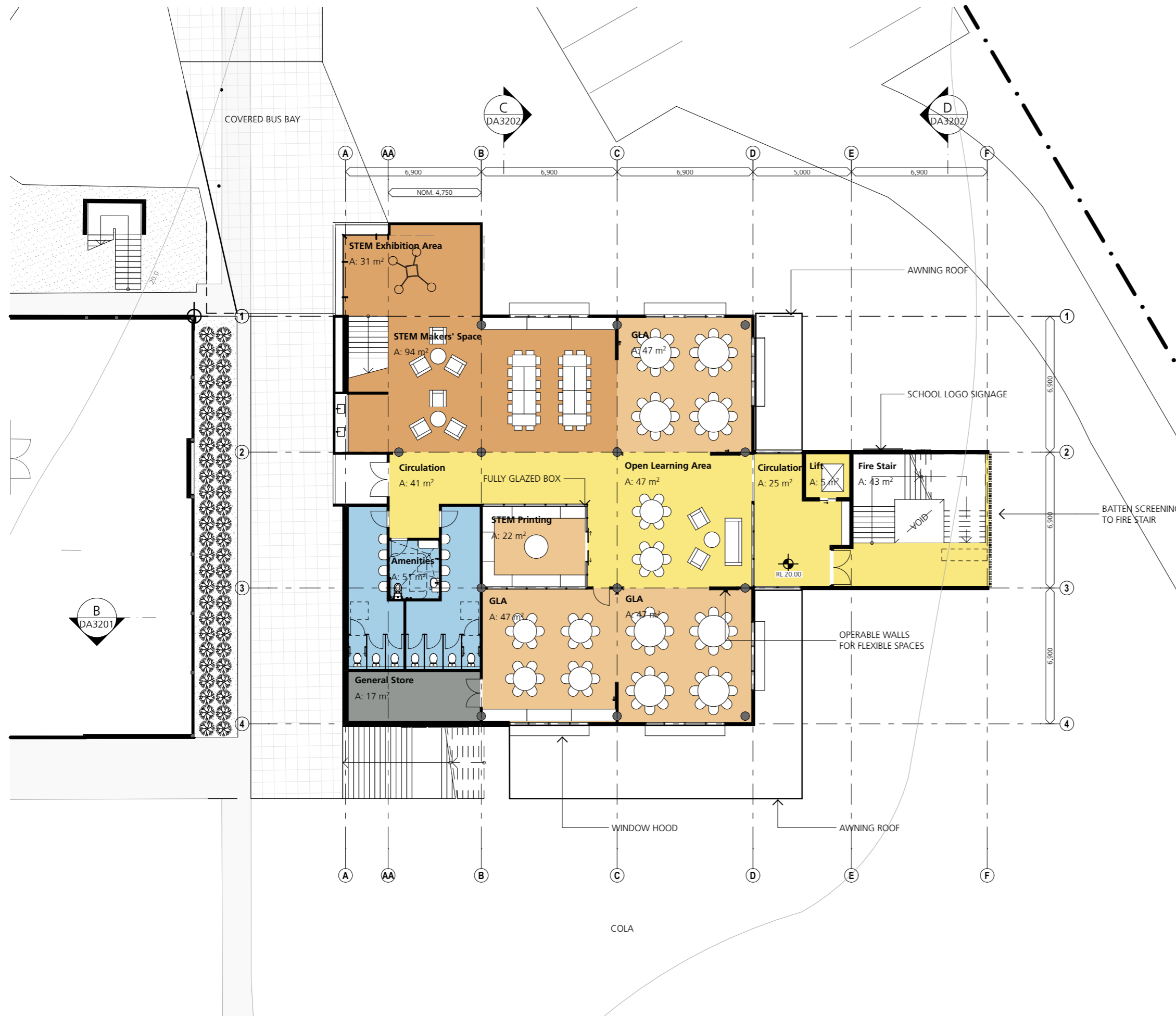
Medowie Christian School
Waropara Road, Medowie

0m 2 4 6 8 10 1:200
@A3



SHAC

Nominated Architect Justin Hamilton (6160) | ABN 32 131 584 846

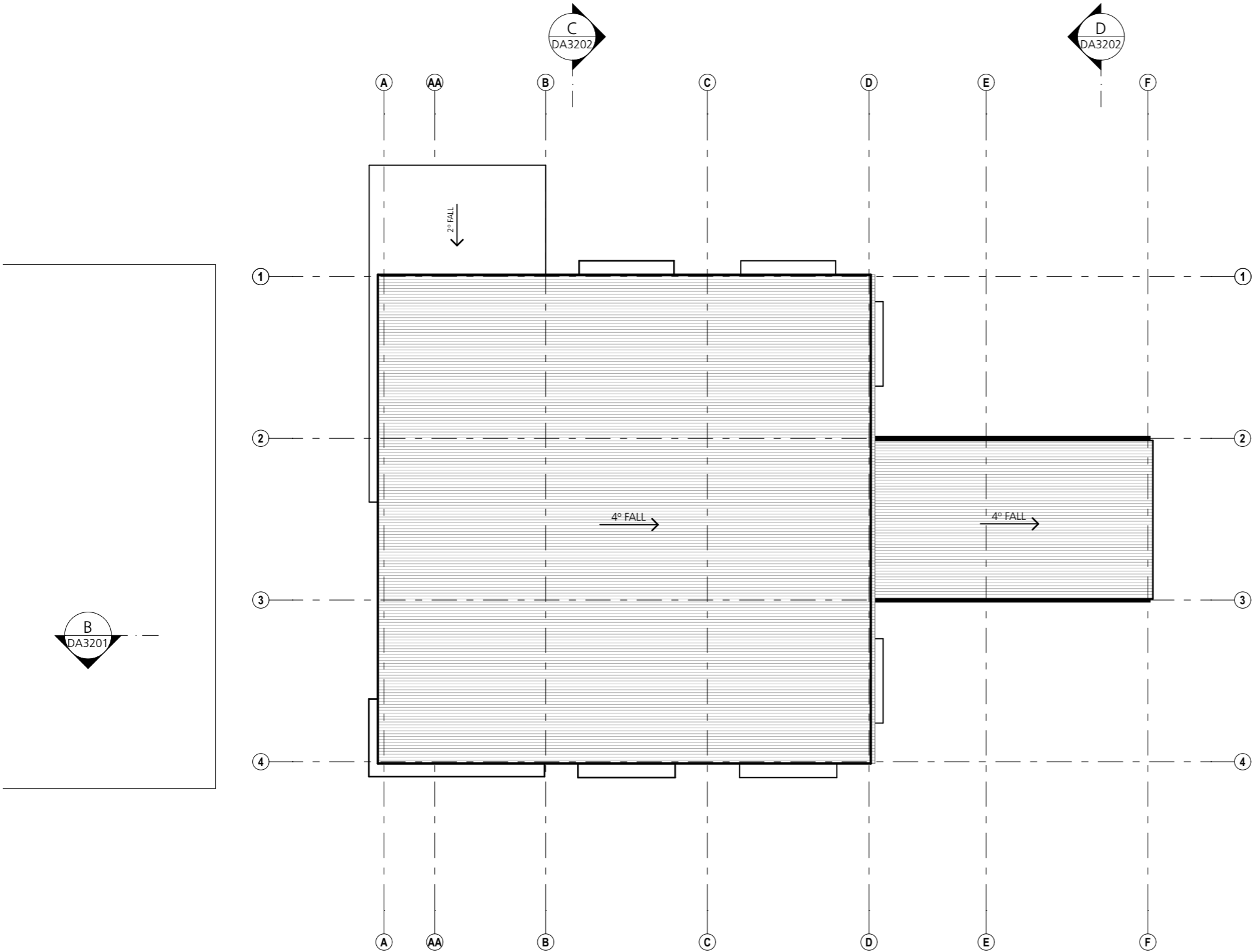


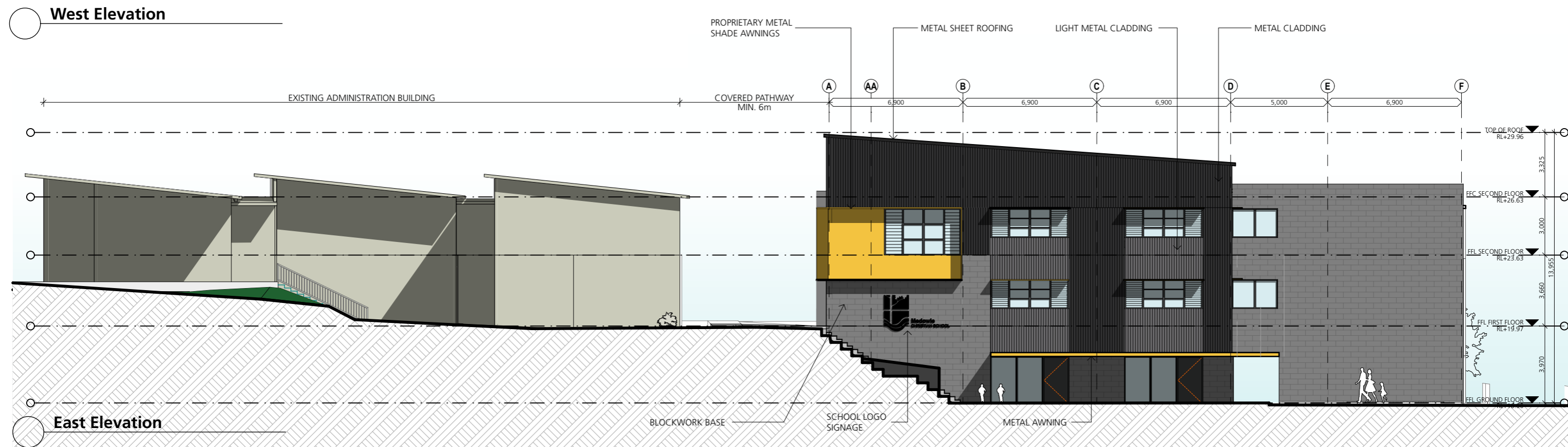
DA SUBMISSION

1. Dimensions are in millimeters unless otherwise shown.

2. Work to given dimensions. Do not scale from drawing.
3. Check all dimensions on site prior to construction and fabrication.

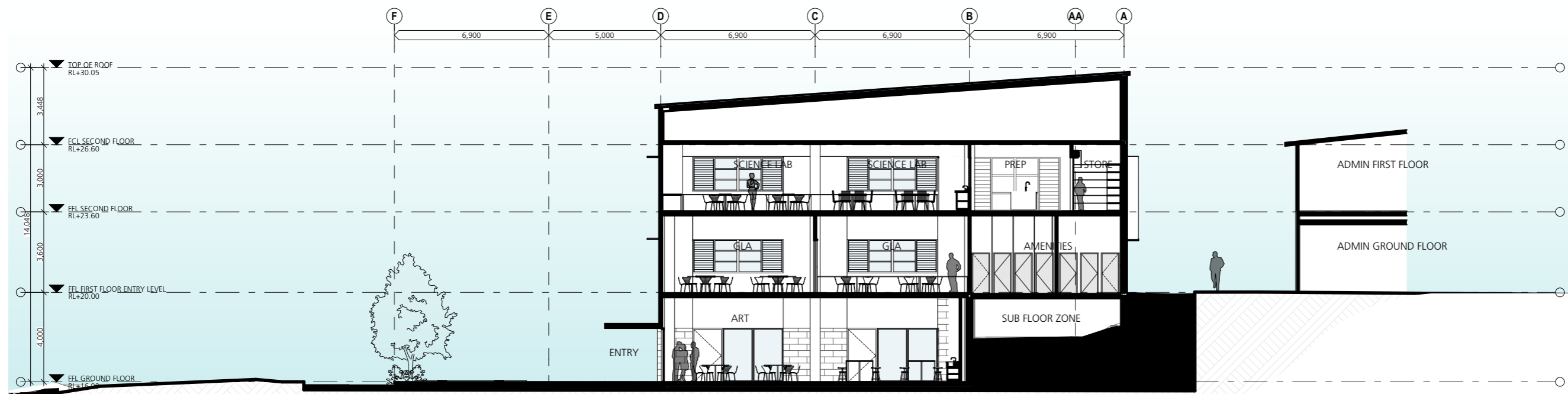
4. Bring any discrepancies to the attention of the proprietor & architect.





-

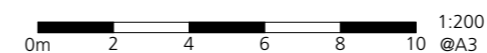
Section A



Section B

RevC 20.09.18

Medowie Christian School
Waropara Road, Medowie

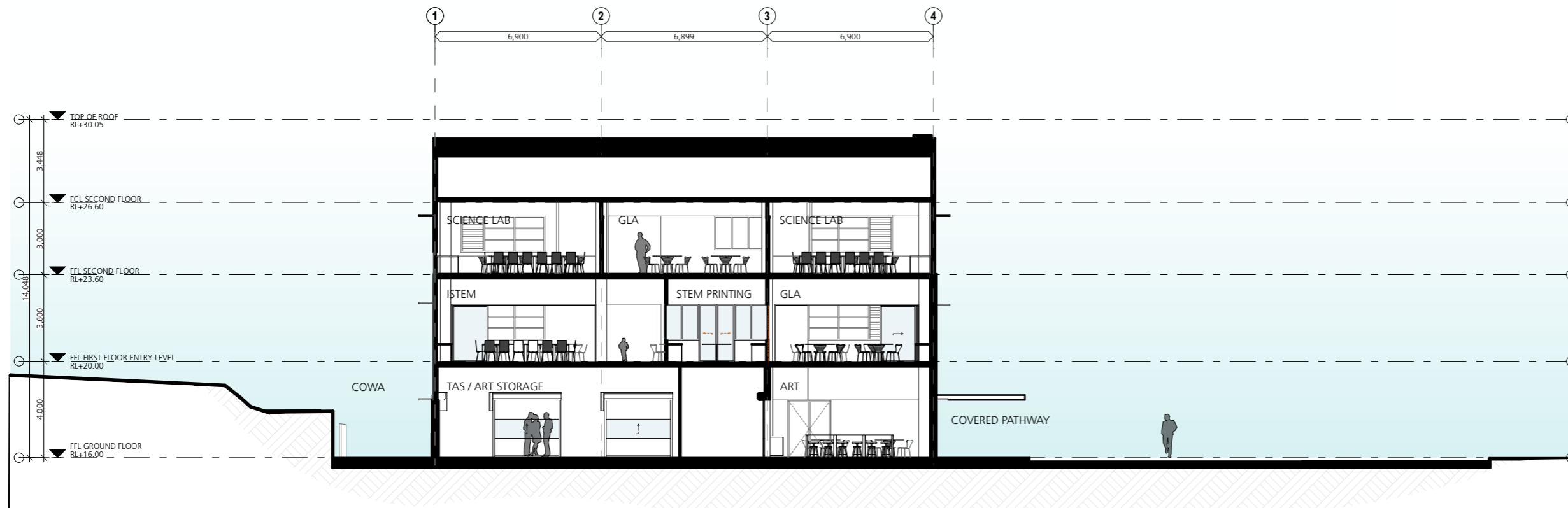


SHA-C

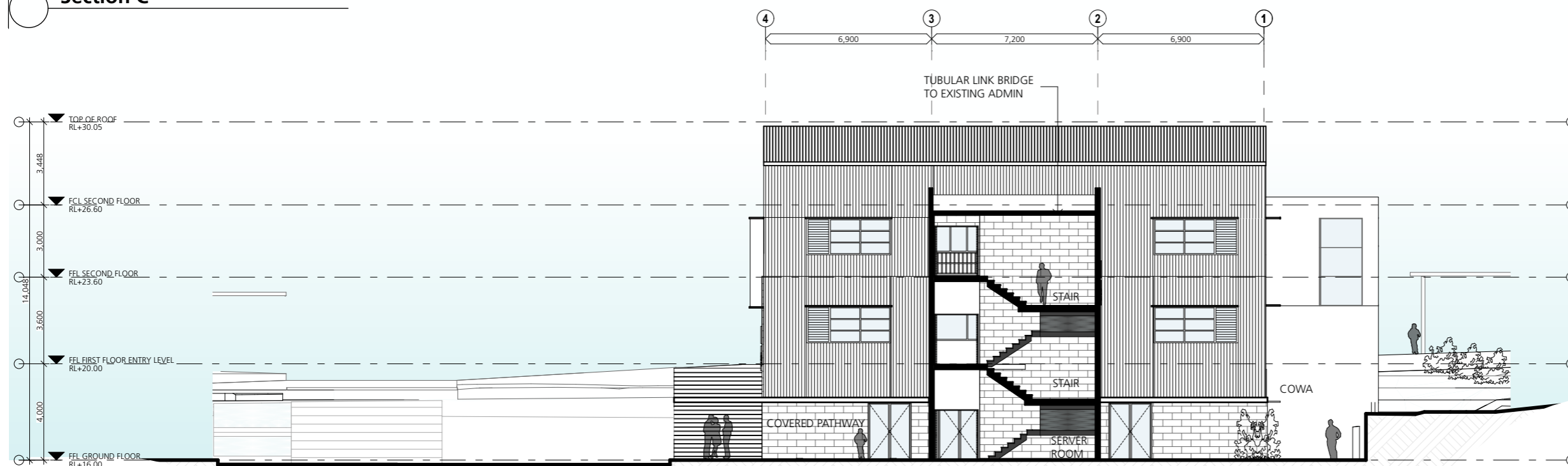
Nominated Architect Justin Hamilton (6160) | ABN 32 131 584 846

DA SUBMISSION

1. Dimensions are in millimeters unless otherwise shown.
2. Work to given dimensions. Do not scale from drawing.
3. Check all dimensions on site prior to construction and fabrication.
4. Bring any discrepancies to the attention of the proprietor & architect.



Section C



Section D

3846
DA3202
RevB 20.09.18

Sections 02

Medowie Christian School
Waropara Road, Medowie



SHA3C

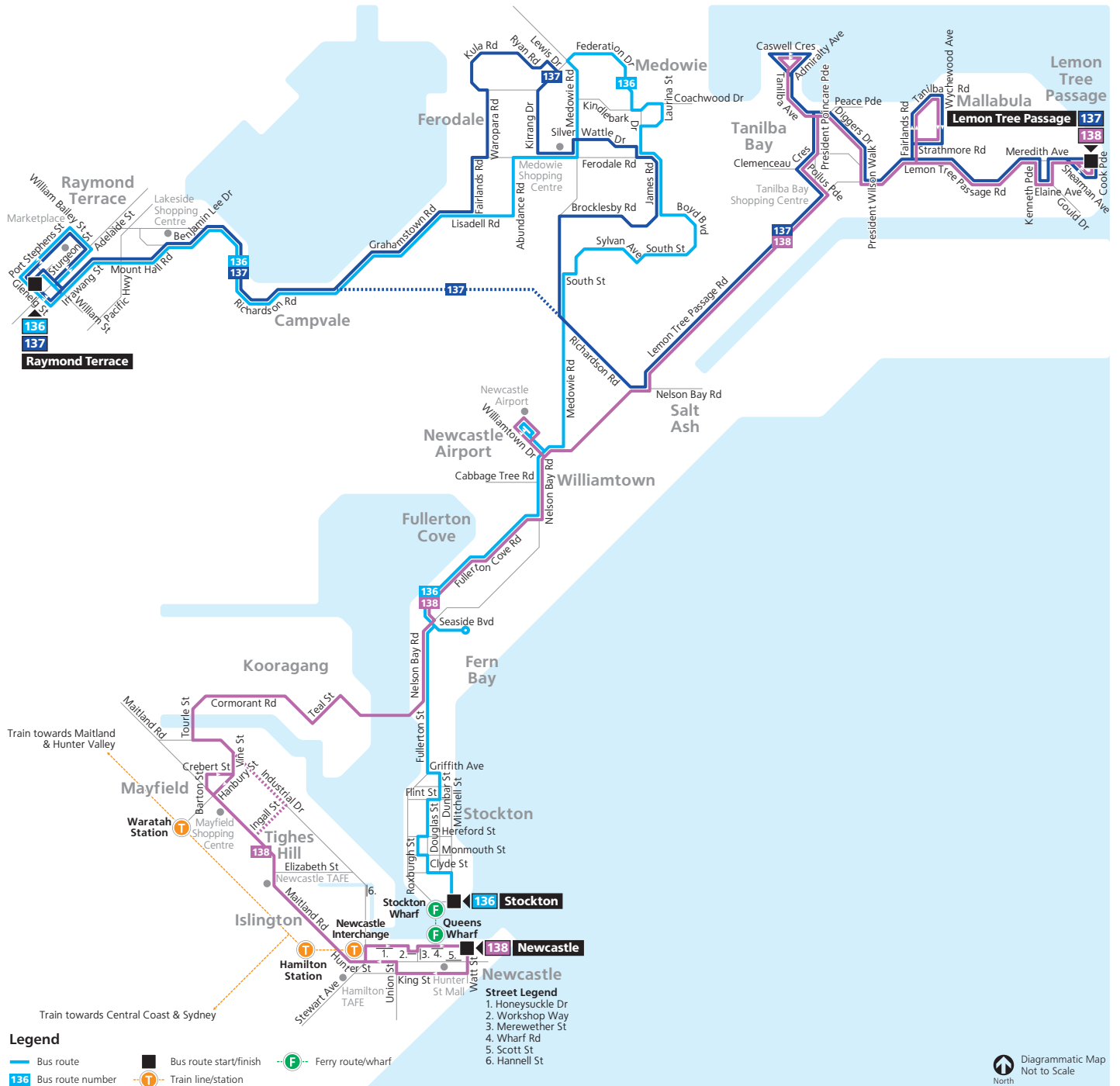
Nominated Architect Justin Hamilton (6160) | ABN 32 131 584 846

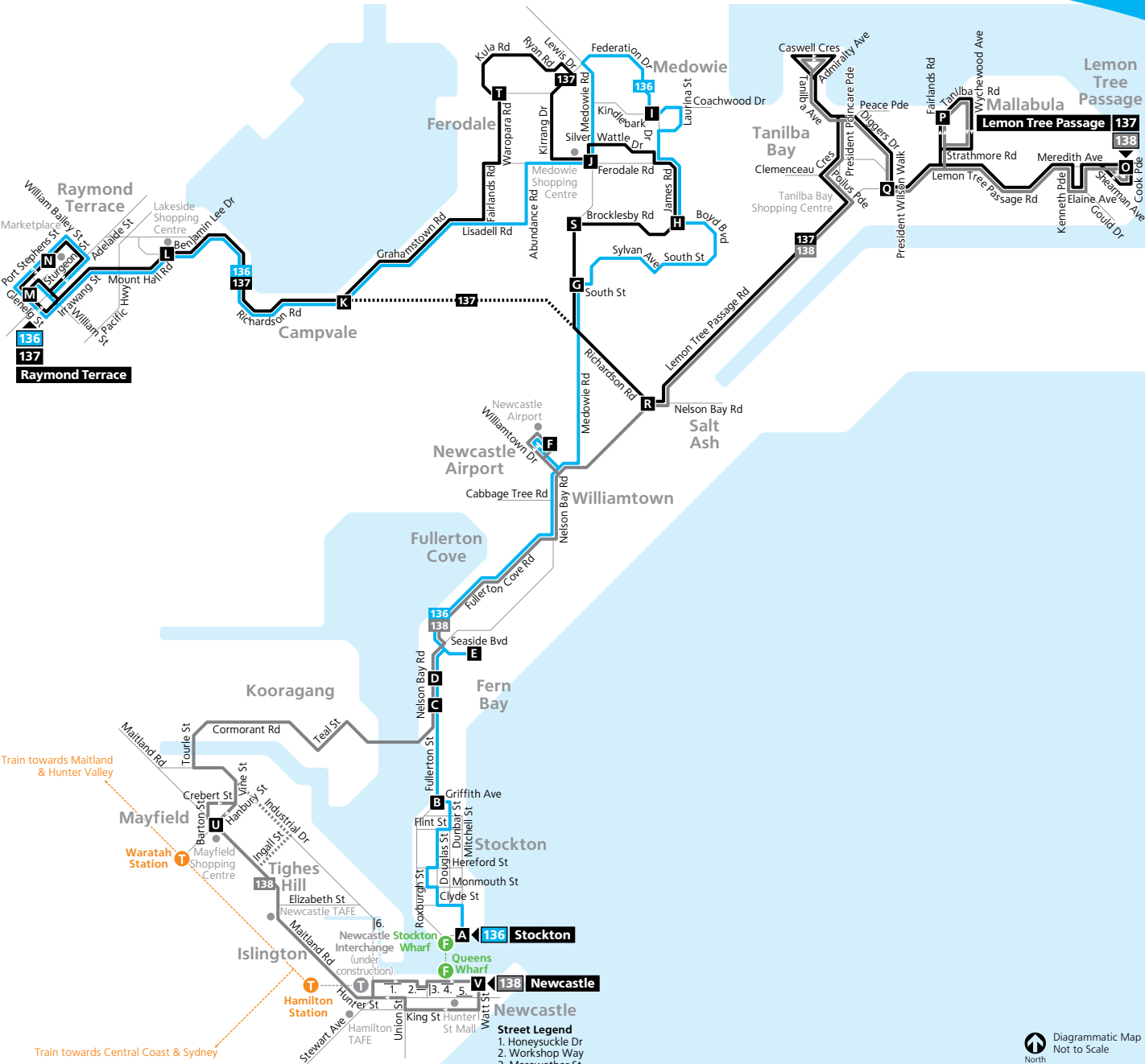
Appendix C

Public Transport Services

Routes 136, 137, 138

B





- Legend**
- Bus route
 - Bus route number
 - Timing point
 - Ferry route/wharf
 - Train line/station

- Street Legend**
- Honeysuckle Dr
 - Workshop Way
 - Merewether St
 - Wharf Rd
 - Scott St
 - Hannell St

Diagrammatic Map
North
Not to Scale





Maitland & Raymond Terrace District

Bus Network Guide

huntervalley
a member of ComfortDelGro Cabcharge Pty Ltd

Effective from:
30 January 2018



Map Legend

- Hospital
- Shopping Centres
- Railway Station
- Schools
- University/TAFE
- Bus Route
- Multiple services on route
- Limited Service
- Bus Route Number
- Bus Route Terminus
- Bus Interchange

As at 30 January 2018
Cartography by TransGraphics

0m 500m 1km
(main map only)

Map Legend

- Maitland
- Beresfield
- Raymond Terrace
- Williamstown
- Mayfield
- Newcastle

Newcastle

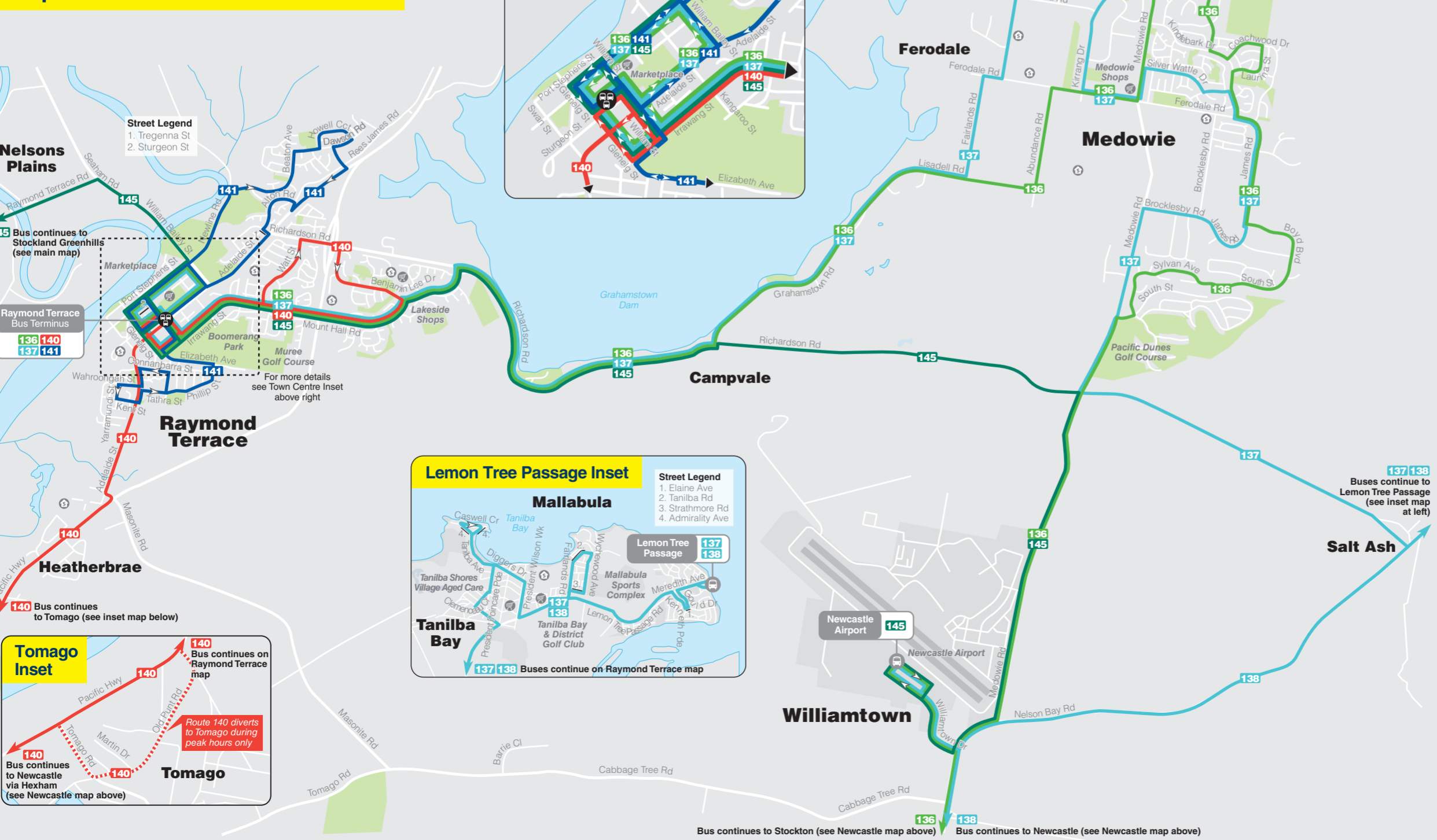
Map A



Visit transportnsw.info
Call 131 500 NRS 133 677

Raymond Terrace

Map B



Map also shows parts of the following services:
257 West Wallsend to Newcastle via Edgeworth, Glendale, Wallsend and Jesmond (operated by Hunter Valley Buses, Region 4)

Description of routes in this timetable

Route 136

Raymond Terrace to Stockton
via Medowvie, Newcastle Airport and Fern Bay.
Service operates daily.

Route 137

Raymond Terrace to Lemon Tree Passage
via Medowvie and Salt Ash.
Service operates daily.

Route 138

Newcastle to Lemon Tree Passage
via Fern Bay, Newcastle Airport and Salt Ash.
Service operates Monday to Friday.


Raymond Terrace, Stockton & Lemon Tree

Bus Timetable

136

137

138

 Includes accessible services
Effective from 10 September 2017



Hunter Valley Buses - v4

Need an Opal card?
opal.com.au

What's inside

| | |
|---------------------------------|---|
| Your Bus timetable | 1 |
| Ticketing | 1 |
| Accessible services | 1 |
| How to use this timetable | 1 |
| Other general information | 1 |
| Bus contacts | 1 |

Timetables

From Raymond Terrace towards Stockton (Route 136)

| | |
|--------------------------------|---|
| Monday to Friday | 2 |
| Saturday | 4 |
| Sunday & Public Holidays | 5 |

From Stockton towards Raymond Terrace (Route 136)

| | |
|-------------------------------|---|
| Monday to Friday | 6 |
| Saturday..... | 8 |
| Sunday & Public Holidays..... | 9 |

From Raymond Terrace towards Lemon Tree Passage (Route 137)

| | |
|---|----|
| Monday to Friday | 10 |
| Saturday / Sunday & Public Holidays | 11 |

From Lemon Tree Passage towards Raymond Terrace (Route 137)

| | |
|---|----|
| Monday to Friday | 12 |
| Saturday / Sunday & Public Holidays | 13 |

From Newcastle towards Lemon Tree Passage (Route 138)

| | |
|------------------------|----|
| Monday to Friday | 14 |
|------------------------|----|

From Lemon Tree Passage towards Newcastle (Route 138)

| | |
|--|----|
| Monday to Friday | 14 |
| Explanation of definitions and symbols | 16 |
| Bus route map | 17 |

Your Bus timetable

Bus services take you around Sydney and outer Sydney metropolitan areas, including Newcastle, the Lower Hunter, the Central Coast, the Blue Mountains, Lithgow and the Illawarra. If you have any questions about getting around on buses, just ask. Staff are here for you.

Opal. Your ticket to public transport.

Opal is the easy way of travelling on public transport in Sydney, the Blue Mountains, Central Coast, Hunter, Illawarra and Southern Highlands.

An Opal card is a smartcard you keep and reuse. You load value onto the card to pay for your travel on any mode of public transport, including trains, buses, ferries and light rail.

Opal card benefits

- Fares capped daily, weekly and on Sundays*
- Discounted travel after eight paid journeys each week
- \$2 discount for every transfer between modes (train, bus, ferry, light rail) as part of one journey within 60 minutes.†
- Off-peak train fare savings of 30%
- The option of auto top-up, so you're always ready to travel

Which Opal card is right for you?

- **Adult** – For customers 16 plus, who usually pay full fare and aren't entitled to any concessions.
- **Child/Youth** – For children aged 4-15 and eligible secondary students over 16. All fares are half the price of Adult fares.
- **Concession** – For eligible tertiary students, job seekers, apprentices and trainees. All fares are half the price of Adult fares.
- **Gold Senior/Pensioner** – For eligible NSW and interstate seniors, pensioners and war widows/ers. Fares are capped at \$2.50 per day.*

How to Apply

Visit **opal.com.au** or call **13 67 25 (13 OPAL)**.

Adult and Child/Youth Opal cards are also available over the counter from 2,100 Opal retailers. To find your nearest visit **retailers.opal.com.au**.


For more information, visit **transportnsw.info** or call **131 500**.

* Capped fares do not include the Sydney Airport station access fee.

† \$1 discount for Child/Youth, Concession and Gold Senior/Pensioner.

Travel with Opal is subject to the Opal Terms of Use, available at **opal.com.au**.

Accessible services

All new buses are wheelchair-accessible with low-level floors and space for wheelchairs, prams or strollers. Look for the symbol  in this timetable. Some older buses may not have all the features you need. There will be more accessible services as older buses are replaced.

We try to make sure accessible buses run as intended. If an accessible bus is not available for a scheduled route, we apologise in advance for the inconvenience.

How to use this timetable

- Go to the route map at the back of this timetable and find the two timing points your bus stop is located between.
- Then find these two timing points on the timetable.
- Your bus is scheduled to arrive between the times shown for these points.

For example

If your bus stop is located between timing points A and B on the route map, then your bus is scheduled to arrive between the times shown for A and B in the timetable. Please arrive at your bus stop around 5 minutes before your bus is scheduled.

This timetable is expressed in 24-hour time.

| 12 midnight to 12 midday | 12 midday to 12 midnight |
|-----------------------------|-----------------------------|
| 00:00 to 11:59 | 12:00 to 23:59 |
| 12.00 am = 00:00 | 12.00 pm = 12:00 |
| 1.00 am = 01:00 | 1.00 pm = 13:00 |
| 2.00 am = 02:00 | 2.00 pm = 14:00 |
| 3.00 am = 03:00 | 3.00 pm = 15:00 |
| 4.00 am = 04:00 | 4.00 pm = 16:00 |
| 5.00 am = 05:00 | 5.00 pm = 17:00 |
| 6.00 am = 06:00 | 6.00 pm = 18:00 |
| 7.00 am = 07:00 | 7.00 pm = 19:00 |
| 8.00 am = 08:00 | 8.00 pm = 20:00 |
| 9.00 am = 09:00 | 9.00 pm = 21:00 |
| 10.00 am = 10:00 | 10.00 pm = 22:00 |
| 11.00 am = 11:00 | 11.00 pm = 23:00 |

Download real-time apps transportnsw.info/apps

Real-time apps let you track trains, buses, ferries and light rail in real time on the go. So don't miss your next Transport connection. Download one of the handy apps to track your service on your mobile device.

- Where your train, bus, ferry or light rail service is right now
- Estimated arrival times
- Service updates
- Closest stations, stops, wharves and routes
- Accessibility details.

Who is providing my bus services?

The bus services shown in this timetable are run by Hunter Valley Buses.

Is this timetable current?

We try to make sure services depart at the specified times. However, timetables may change and services may be delayed, cancelled or diverted due to circumstances beyond our control.

If you have not travelled with us for a while, you can confirm this timetable is still current by visiting **transportnsw.info** or calling **131 500**.

Over Christmas and the New Year, a reduced timetable may operate. If you're travelling during this time, plan your trip at **transportnsw.info** or call **131 500**.

Bus etiquette

Eating, drinking, smoking or playing loud music on the bus is not allowed. By law, smoking is not allowed at any bus stop, or at train stations, ferry wharves or light rail stops.

Helpful contacts

To plan your trip, get service information and make general enquiries:

Visit **transportnsw.info** or call **131 500**.

If you are deaf, or have a hearing or speech impairment contact us through the National Relay Service on **133 677**. For more information visit **relayservice.gov.au**.

Lost property offices
Visit **transportnsw.info** or call **131 500 NRS 133 677** to contact the operator of your service. If you still have your bus ticket, it will help identify the bus you travelled on.

Emergencies
Call Triple Zero (**000**)





Crime Stoppers
To give information that may help stop, solve or prevent criminal activity
Call **1800 333 000**

Police Assistance Line
To report thefts or other non-life threatening matters
Call **131 444**

Disclaimer: Information in this timetable is based on the latest details at the time of printing, and is subject to change without notice.

| Monday to Friday | | | | | | | | | | | | |
|------------------|---|-------|-------|-------|-------|-------|-------|-------|-------|-------|-------|-------|
| map ref | Route Number | 136 | 136 | 136 | 136 | 136 | 136 | 136 | 136 | 136 | 136 | 136 |
| N | Raymond Terrace Market Place | ... | ... | 06:05 | ... | 06:50 | ... | 07:21 | ... | 08:46 | ... | 09:36 |
| M | Raymond Terrace Sturgeon Street | ... | ... | 06:07 | ... | 06:52 | ... | 07:24 | ... | 08:49 | ... | 09:39 |
| L | Lakeside Tavern Benjamin Lee Drive | ... | ... | 06:13 | ... | 06:58 | ... | 07:30 | ... | 08:55 | ... | 09:45 |
| K | Richardson Road & Grahamstown Road | ... | ... | 06:18 | ... | 07:03 | ... | 07:35 | ... | 09:00 | ... | 09:50 |
| J | Medowvie Shops Ferodale Road | ... | ... | 06:26 | ... | 07:11 | ... | 07:43 | ... | 09:08 | ... | 09:58 |
| I | Federation Drive & Kindlebark Drive | ... | ... | 06:33 | ... | 07:18 | ... | 07:50 | ... | 09:15 | ... | 10:05 |
| H | James Street & Boyd Boulevard | ... | ... | 06:38 | ... | 07:23 | ... | 07:55 | ... | 09:20 | ... | 10:10 |
| G | South Street & Medowvie Road | ... | ... | 06:44 | ... | 07:29 | ... | 08:01 | ... | 09:26 | ... | 10:16 |
| F | Newcastle Airport Terminus | ... | ... | 06:53 | ... | 07:38 | ... | 08:10 | ... | 09:35 | ... | 10:25 |
| E | Seaside Village Seaside Boulevard | 06:08 | 06:39 | 07:04 | 07:28 | 07:49 | 08:08 | 08:21 | 08:48 | 09:46 | 10:08 | 10:36 |
| D | Bay Way Caravan Park | 06:10 | 06:41 | 07:07 | 07:31 | 07:52 | 08:11 | 08:24 | 08:51 | 09:49 | 10:10 | 10:38 |
| C | Fern Bay Nelson Bay Road & Taylor Road | 06:12 | 06:43 | 07:09 | 07:33 | 07:54 | 08:13 | 08:26 | 08:53 | 09:51 | 10:12 | 10:40 |
| B | Griffith Street & Fullerton Street | 06:15 | 06:46 | 07:12 | 07:36 | 07:57 | 08:16 | 08:29 | 08:56 | 09:54 | 10:15 | 10:43 |
| A | Stockton Wharf Mitchell Street | 06:23 | 06:54 | 07:21 | 07:45 | 08:06 | 08:25 | 08:38 | 09:05 | 10:03 | 10:24 | 10:52 |
| P | Stockton Wharf ferry to Newcastle departs | 06:30 | 07:00 | 07:30 | 07:50 | 08:10 | 08:30 | 08:50 | 09:15 | 10:10 | 10:30 | 11:00 |

| Monday to Friday (continued...) | | | | | | | | | | | | |
|---------------------------------|---|-------|-------|-------|-------|-------|-------|-------|-------|----------------|-------|-------|
| map ref | Route Number | 136 | 136 | 136 | 136 | 136 | 136 | 136 | 136 | 136 | 136 | 136 |
| N | Raymond Terrace Market Place | ... | 10:36 | ... | 11:36 | ... | 12:36 | ... | 13:36 | ... | ... | 15:07 |
| M | Raymond Terrace Sturgeon Street | ... | 10:38 | ... | 11:38 | ... | 12:38 | ... | 13:38 | ... | ... | 15:10 |
| L | Lakeside Tavern Benjamin Lee Drive | ... | 10:44 | ... | 11:44 | ... | 12:44 | ... | 13:44 | ... | ... | 15:16 |
| K | Richardson Road & Grahamstown Road | ... | 10:49 | ... | 11:49 | ... | 12:49 | ... | 13:49 | ... | ... | 15:21 |
| J | Medowvie Shops Ferodale Road | ... | 10:57 | ... | 11:57 | ... | 12:57 | ... | 13:57 | ... | ... | 15:29 |
| I | Federation Drive & Kindlebark Drive | ... | 11:04 | ... | 12:04 | ... | 13:04 | ... | 14:04 | ... | ... | 15:36 |
| H | James Street & Boyd Boulevard | ... | 11:09 | ... | 12:09 | ... | 13:09 | ... | 14:09 | ... | ... | 15:41 |
| G | South Street & Medowvie Road | ... | 11:15 | ... | 12:15 | ... | 13:15 | ... | 14:15 | ... | ... | 15:47 |
| F | Newcastle Airport Terminus | ... | 11:24 | ... | 12:24 | ... | 13:24 | ... | 14:24 | ... | ... | 15:56 |
| E | Seaside Village Seaside Boulevard | 11:01 | 11:35 | 12:13 | 12:35 | 13:08 | 13:35 | 14:04 | 14:35 | 15:06 | 15:49 | 16:07 |
| D | Bay Way Caravan Park | 11:03 | 11:37 | 12:15 | 12:37 | 13:10 | 13:37 | 14:06 | 14:37 | A 15:08 | 15:51 | 16:09 |
| C | Fern Bay Nelson Bay Road & Taylor Road | 11:05 | 11:39 | 12:17 | 12:39 | 13:12 | 13:39 | 14:08 | 14:39 | 15:10 | 15:53 | 16:11 |
| B | Griffith Street & Fullerton Street | 11:08 | 11:42 | 12:20 | 12:42 | 13:15 | 13:42 | 14:11 | 14:42 | C 15:13 | 15:56 | 16:14 |
| A | Stockton Wharf Mitchell Street | 11:17 | 11:51 | 12:29 | 12:51 | 13:24 | 13:51 | 14:20 | 14:51 | 15:23 | 16:05 | 16:23 |
| P | Stockton Wharf ferry to Newcastle departs | 11:30 | 12:00 | 12:40 | 13:00 | 13:30 | 14:00 | 14:30 | 15:00 | 15:30 | 16:10 | ... |

| Monday to Friday (continued...) | |  |  |  |  | | | |
|---------------------------------|---|---|---|--|---|-------|-------|-------|
| map ref | Route Number | 136 | 136 | 136 | 136 | 136 | 136 | 136 |
| N | Raymond Terrace Market Place | 15:52 | ... | 16:30 | 17:10 | ... | 18:01 | ... |
| M | Raymond Terrace Sturgeon Street | 15:55 | ... | 16:33 | 17:13 | ... | 18:03 | ... |
| L | Lakeside Tavern Benjamin Lee Drive | 16:01 | ... | 16:39 | 17:19 | ... | 18:09 | ... |
| K | Richardson Road & Grahamstown Road | 16:06 | ... | 16:44 | 17:24 | ... | 18:14 | ... |
| J | Medowie Shops Ferodale Road | 16:14 | ... | 16:52 | 17:32 | ... | 18:22 | ... |
| I | Federation Drive & Kindlebark Drive | 16:21 | ... | 16:59 | 17:39 | ... | 18:29 | ... |
| H | James Street & Boyd Boulevard | 16:26 | ... | 17:04 | 17:44 | ... | 18:34 | ... |
| G | South Street & Medowie Road | 16:32 | ... | 17:10 | 17:50 | ... | 18:40 | ... |
| F | Newcastle Airport Terminus | 16:41 | ... | 17:19 | 17:59 | ... | 18:49 | ... |
| E | Seaside Village Seaside Boulevard | 16:52 | 17:07 | 17:30 | 18:10 | 18:27 | 19:00 | 19:22 |
| D | Bay Way Caravan Park | 16:54 | 17:09 | 17:32 | 18:12 | 18:29 | 19:02 | 19:24 |
| C | Fern Bay Nelson Bay Road & Taylor Road | 16:56 | 17:11 | 17:34 | 18:14 | 18:31 | 19:04 | 19:26 |
| B | Griffith Street & Fullerton Street | 16:59 | 17:14 | 17:37 | 18:17 | 18:34 | 19:07 | 19:29 |
| A | Stockton Wharf Mitchell Street | 17:08 | 17:23 | 17:46 | 18:25 | 18:42 | 19:15 | 19:37 |
| P | Stockton Wharf ferry to Newcastle departs | 17:10 | 17:30 | 17:50 | 18:30 | ... | 19:25 | 19:45 |

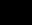
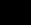




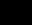
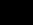
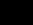
| Saturday | | | | | | | | | | | | |
|----------|---|-------|-------|-------|-------|-------|-------|-------|-------|-------|-------|-------|
| map ref | Route Number | 136 | 136 | 136 | 136 | 136 | 136 | 136 | 136 | 136 | 136 | 136 |
| N | Raymond Terrace Market Place | ... | 08:46 | 09:37 | 10:37 | 11:37 | 12:37 | 13:37 | 14:37 | 15:39 | 16:37 | 18:09 |
| M | Raymond Terrace Sturgeon Street | ... | 08:48 | 09:39 | 10:39 | 11:39 | 12:39 | 13:39 | 14:39 | 15:41 | 16:39 | 18:11 |
| L | Lakeside Tavern Benjamin Lee Drive | ... | 08:54 | 09:45 | 10:45 | 11:45 | 12:45 | 13:45 | 14:45 | 15:47 | 16:45 | 18:17 |
| K | Richardson Road & Grahamstown Road | ... | 08:59 | 09:50 | 10:50 | 11:50 | 12:50 | 13:50 | 14:50 | 15:52 | 16:50 | 18:22 |
| J | Medowie Shops Ferodale Road | ... | 09:07 | 09:58 | 10:58 | 11:58 | 12:58 | 13:58 | 14:58 | 16:00 | 16:58 | 18:30 |
| I | Federation Drive & Kindlebark Drive | ... | 09:14 | 10:05 | 11:05 | 12:05 | 13:05 | 14:05 | 15:05 | 16:07 | 17:05 | 18:37 |
| H | James Street & Boyd Boulevard | ... | 09:19 | 10:10 | 11:10 | 12:10 | 13:10 | 14:10 | 15:10 | 16:12 | 17:10 | 18:42 |
| G | South Street & Medowie Road | ... | 09:25 | 10:16 | 11:16 | 12:16 | 13:16 | 14:16 | 15:16 | 16:18 | 17:16 | 18:48 |
| F | Newcastle Airport Terminus | 08:16 | 09:34 | 10:25 | 11:25 | 12:25 | 13:25 | 14:25 | 15:25 | 16:27 | 17:25 | 18:57 |
| E | Seaside Village Seaside Boulevard | 08:27 | 09:45 | 10:36 | 11:36 | 12:36 | 13:36 | 14:36 | 15:36 | 16:38 | 17:36 | ... |
| D | Bay Way Caravan Park | 08:29 | 09:47 | 10:38 | 11:38 | 12:38 | 13:38 | 14:38 | 15:38 | 16:40 | 17:38 | ... |
| C | Fern Bay Nelson Bay Road & Taylor Road | 08:31 | 09:49 | 10:40 | 11:40 | 12:40 | 13:40 | 14:40 | 15:40 | 16:42 | 17:40 | ... |
| B | Griffith Street & Fullerton Street | 08:34 | 09:52 | 10:43 | 11:43 | 12:43 | 13:43 | 14:43 | 15:43 | 16:45 | 17:43 | ... |
| A | Stockton Wharf Mitchell Street | 08:43 | 10:01 | 10:52 | 11:52 | 12:51 | 13:51 | 14:51 | 15:51 | 16:53 | 17:51 | ... |
| P | Stockton Wharf ferry to Newcastle departs | 08:50 | 10:10 | 11:00 | 12:00 | 13:00 | 14:00 | 15:00 | 16:00 | 17:00 | 18:00 | ... |

| Sunday & Public Holidays | |  |  |  |  |
|--------------------------|---|---|---|---|---|
| map ref | Route Number | 136 | 136 | 136 | 136 |
| N | Raymond Terrace Market Place | 09:23 | 11:40 | 13:40 | 15:40 |
| M | Raymond Terrace Sturgeon Street | 09:25 | 11:42 | 13:42 | 15:42 |
| L | Lakeside Tavern Benjamin Lee Drive | 09:31 | 11:48 | 13:48 | 15:48 |
| K | Richardson Road & Grahamstown Road | 09:36 | 11:53 | 13:53 | 15:53 |
| J | Medowie Shops Ferodale Road | 09:44 | 12:01 | 14:01 | 16:01 |
| I | Federation Drive & Kindlebark Drive | 09:51 | 12:08 | 14:08 | 16:08 |
| H | James Street & Boyd Boulevard | 09:56 | 12:13 | 14:13 | 16:13 |
| G | South Street & Medowie Road | 10:02 | 12:19 | 14:19 | 16:19 |
| F | Newcastle Airport Terminus | 10:11 | 12:28 | 14:28 | 16:28 |
| E | Seaside Village Seaside Boulevard | 10:22 | 12:39 | 14:39 | 16:39 |
| D | Bay Way Caravan Park | 10:24 | 12:41 | 14:41 | 16:41 |
| C | Fern Bay Nelson Bay Road & Taylor Road | 10:26 | 12:43 | 14:43 | 16:43 |
| B | Griffith Street & Fullerton Street | 10:29 | 12:46 | 14:46 | 16:46 |
| A | Stockton Wharf Mitchell Street | 10:37 | 12:54 | 14:54 | 16:54 |
| P | Stockton Wharf ferry to Newcastle departs | 10:45 | 13:00 | 15:00 | 17:00 |



Monday to Friday

Stockton to Raymond Terrace (Route 136)

| Monday to Friday | |  |  |  |  |  |  |  |  |  |  | |
|------------------|---|---|---|---|---|--|---|---|---|---|---|----------------|
| map ref | Route Number | 136 | 136 | 136 | 136 | 136 | 136 | 136 | 136 | 136 | 136 | |
| F | Stockton Wharf ferry from Newcastle arrives | ... | 06:20 | 06:50 | 07:20 | 07:45 | 08:25 | 08:45 | 09:05 | ... | 10:05 | 10:25 |
| A | Stockton Wharf Mitchell Street | ... | 06:23 | 06:56 | 07:25 | 07:51 | 08:30 | 08:50 | 09:10 | 09:51 | 10:10 | 10:35 |
| B | Griffith Street & Fullerton Street | ... | 06:31 | 07:05 | 07:34 | 08:00 | 08:39 | 08:59 | 09:19 | 10:00 | 10:18 | 10:43 |
| C | Fern Bay Nelson Bay Road & Taylor Road | ... | 06:34 | 07:08 | 07:37 | 08:03 | 08:42 | 09:02 | 09:22 | 10:03 | 10:21 | 10:46 |
| D | Bay Way Caravan Park | ... | B 06:36 | B 07:10 | 07:39 | B 08:05 | 08:44 | B 09:04 | 09:24 | B 10:05 | 10:23 | B 10:48 |
| E | Seaside Village Seaside Boulevard | ... | 06:39 | 07:13 | 07:42 | 08:08 | 08:47 | 09:07 | 09:27 | 10:08 | 10:26 | 10:51 |
| F | Newcastle Airport Terminus | 06:26 | ... | ... | 07:53 | ... | 08:58 | ... | 09:38 | ... | 10:37 | ... |
| G | South Street & Medowie Road | 06:35 | ... | ... | 08:02 | ... | 09:07 | ... | 09:47 | ... | 10:46 | ... |
| H | James Street & Boyd Boulevard | 06:40 | ... | ... | 08:07 | ... | 09:12 | ... | 09:52 | ... | 10:51 | ... |
| I | Federation Drive & Kindlebark Drive | 06:45 | ... | ... | 08:13 | ... | 09:17 | ... | 09:57 | ... | 10:56 | ... |
| J | Medowie Shops Ferodale Road | 06:52 | ... | ... | 08:20 | ... | 09:24 | ... | 10:04 | ... | 11:03 | ... |
| K | Richardson Road & Grahamstown Road | 07:00 | ... | ... | 08:28 | ... | 09:32 | ... | 10:12 | ... | 11:11 | ... |
| L | Lakeside Tavern Benjamin Lee Drive | 07:05 | ... | ... | D 08:33 | ... | 09:37 | ... | 10:17 | ... | 11:16 | ... |
| M | Raymond Terrace Sturgeon Street | 07:11 | ... | ... | 08:43 | ... | 09:43 | ... | 10:23 | ... | 11:22 | ... |
| N | Raymond Terrace Market Place | 07:15 | ... | ... | 08:47 | ... | 09:47 | ... | 10:27 | ... | 11:26 | ... |

| Monday to Friday (continued...) | | | | | | | | | | | | |
|---------------------------------|---|-------|--------|-------|--------|-------|--------|-------|-------|--------|--------|-------|
| map ref | Route Number | 136 | 136 | 136 | 136 | 136 | 136 | 136 | 136 | 136 | 136 | |
| F | Stockton Wharf ferry from Newcastle arrives | 10:50 | 11:20 | 11:50 | 12:35 | 12:55 | 13:20 | 13:50 | 14:50 | 15:20 | ... | 16:05 |
| A | Stockton Wharf Mitchell Street | 11:00 | 11:30 | 12:00 | 12:40 | 13:00 | 13:30 | 14:00 | 15:00 | 15:25 | 15:42 | 16:10 |
| B | Griffith Street & Fullerton Street | 11:08 | 11:38 | 12:08 | 12:48 | 13:08 | 13:38 | 14:09 | 15:09 | 15:34 | 15:51 | 16:19 |
| C | Fern Bay Nelson Bay Road & Taylor Road | 11:11 | 11:41 | 12:11 | 12:51 | 13:11 | 13:41 | 14:12 | 15:12 | 15:37 | 15:54 | 16:22 |
| D | Bay Way Caravan Park | 11:13 | B11:43 | 12:13 | B12:53 | 13:13 | B13:43 | 14:14 | 15:14 | B15:39 | B15:56 | 16:24 |
| E | Seaside Village Seaside Boulevard | 11:16 | 11:46 | 12:16 | 12:56 | 13:16 | 13:46 | 14:17 | 15:17 | 15:42 | 15:59 | 16:27 |
| F | Newcastle Airport Terminus | 11:27 | ... | 12:27 | ... | 13:27 | ... | 14:28 | 15:28 | ... | ... | 16:38 |
| G | South Street & Medowie Road | 11:36 | ... | 12:36 | ... | 13:36 | ... | 14:37 | 15:37 | ... | ... | 16:47 |
| H | James Street & Boyd Boulevard | 11:41 | ... | 12:41 | ... | 13:41 | ... | 14:42 | 15:42 | ... | ... | 16:52 |
| I | Federation Drive & Kindlebark Drive | 11:46 | ... | 12:46 | ... | 13:46 | ... | 14:47 | 15:47 | ... | ... | 16:57 |
| J | Medowie Shops Ferodale Road | 11:53 | ... | 12:53 | ... | 13:53 | ... | 14:54 | 15:54 | ... | ... | 17:04 |
| K | Richardson Road & Grahamstown Road | 12:01 | ... | 13:01 | ... | 14:01 | ... | 15:02 | 16:02 | ... | ... | 17:12 |
| L | Lakeside Tavern Benjamin Lee Drive | 12:06 | ... | 13:06 | ... | 14:06 | ... | 15:07 | 16:07 | ... | ... | 17:17 |
| M | Raymond Terrace Sturgeon Street | 12:12 | ... | 13:12 | ... | 14:12 | ... | 15:13 | 16:13 | ... | ... | 17:23 |
| N | Raymond Terrace Market Place | 12:16 | ... | 13:16 | ... | 14:16 | ... | 15:17 | 16:17 | ... | ... | 17:27 |

| Monday to Friday (continued...) | | | | | | | |
|---------------------------------|---|----------------|-------|----------------|----------------|-------|----------------|
| map ref | Route Number | 136 | 136 | 136 | 136 | 136 | 136 |
| F | Stockton Wharf ferry from Newcastle arrives | 16:45 | 17:05 | 17:25 | 18:05 | 18:25 | 19:20 |
| A | Stockton Wharf Mitchell Street | 16:50 | 17:13 | 17:30 | 18:10 | 18:30 | 19:25 |
| B | Griffith Street & Fullerton Street | 16:59 | 17:22 | 17:39 | 18:18 | 18:38 | 19:33 |
| C | Fern Bay Nelson Bay Road & Taylor Road | 17:02 | 17:25 | 17:42 | 18:21 | 18:41 | 19:36 |
| D | Bay Way Caravan Park | B 17:04 | 17:27 | B 17:44 | B 18:23 | 18:43 | B 19:18 |
| E | Seaside Village Seaside Boulevard | 17:07 | 17:30 | 17:47 | 18:26 | 18:46 | 19:41 |
| F | Newcastle Airport Terminus | ... | 17:41 | ... | ... | 18:57 | 19:52 |
| G | South Street & Medowie Road | ... | 17:50 | ... | ... | 19:06 | 20:01 |
| H | James Street & Boyd Boulevard | ... | 17:55 | ... | ... | 19:11 | 20:06 |
| I | Federation Drive & Kindlebark Drive | ... | 18:00 | ... | ... | 19:16 | 20:11 |
| J | Medowie Shops Ferodale Road | ... | 18:07 | ... | ... | 19:23 | 20:18 |
| K | Richardson Road & Grahamstown Road | ... | 18:15 | ... | ... | 19:31 | 20:26 |
| L | Lakeside Tavern Benjamin Lee Drive | ... | 18:20 | ... | ... | 19:36 | 20:31 |
| M | Raymond Terrace Sturgeon Street | ... | 18:26 | ... | ... | 19:42 | 20:37 |
| N | Raymond Terrace Market Place | ... | 18:30 | ... | ... | 19:46 | 20:41 |



| Saturday | | | | | | | | | | | |
|----------|---|-------|-------|-------|-------|-------|-------|-------|-------|-------|-------|
| map ref | Route Number | 136 | 136 | 136 | 136 | 136 | 136 | 136 | 136 | 136 | 136 |
| F | Stockton Wharf ferry from Newcastle arrives | 07:50 | 09:05 | 10:05 | 10:50 | 11:50 | 12:55 | 13:50 | 14:50 | 15:45 | 16:50 |
| A | Stockton Wharf Mitchell Street | 08:00 | 09:10 | 10:10 | 11:00 | 12:00 | 13:00 | 14:00 | 15:00 | 16:00 | 17:00 |
| B | Griffith Street & Fullerton Street | 08:08 | 09:18 | 10:18 | 11:08 | 12:08 | 13:08 | 14:08 | 15:08 | 16:08 | 17:08 |
| C | Fern Bay Nelson Bay Road & Taylor Road | 08:11 | 09:21 | 10:21 | 11:11 | 12:11 | 13:11 | 14:11 | 15:11 | 16:11 | 17:11 |
| D | Bay Way Caravan Park | 08:13 | 09:23 | 10:23 | 11:13 | 12:13 | 13:13 | 14:13 | 15:13 | 16:13 | 17:13 |
| E | Seaside Village Seaside Boulevard | 08:16 | 09:26 | 10:26 | 11:16 | 12:16 | 13:16 | 14:16 | 15:16 | 16:16 | 17:16 |
| F | Newcastle Airport Terminus | 08:27 | 09:37 | 10:37 | 11:27 | 12:27 | 13:27 | 14:27 | 15:27 | 16:27 | 17:27 |
| G | South Street & Medowie Road | 08:36 | 09:46 | 10:46 | 11:36 | 12:36 | 13:36 | 14:36 | 15:36 | 16:36 | 17:36 |
| H | James Street & Boyd Boulevard | 08:41 | 09:51 | 10:51 | 11:41 | 12:41 | 13:41 | 14:41 | 15:41 | 16:41 | 17:41 |
| I | Federation Drive & Kindlebark Drive | 08:46 | 09:56 | 10:56 | 11:46 | 12:46 | 13:46 | 14:46 | 15:46 | 16:46 | 17:46 |
| J | Medowie Shops Ferodale Road | 08:53 | 10:03 | 11:03 | 11:53 | 12:53 | 13:53 | 14:53 | 15:53 | 16:53 | 17:53 |
| K | Richardson Road & Grahamstown Road | 09:01 | 10:11 | 11:11 | 12:01 | 13:01 | 14:01 | 15:01 | 16:01 | 17:01 | 18:01 |
| L | Lakeside Tavern Benjamin Lee Drive | 09:06 | 10:16 | 11:16 | 12:06 | 13:06 | 14:06 | 15:06 | 16:06 | 17:06 | 18:06 |
| M | Raymond Terrace Sturgeon Street | 09:12 | 10:22 | 11:22 | 12:12 | 13:12 | 14:12 | 15:12 | 16:12 | 17:12 | 18:12 |
| N | Raymond Terrace Market Place | 09:16 | 10:26 | 11:26 | 12:16 | 13:16 | 14:16 | 15:16 | 16:16 | 17:16 | 18:16 |

| Sunday & Public Holidays | |  |  |  |  |
|--------------------------|--|---|---|---|---|
| map ref | Route Number | 136 | 136 | 136 | 136 |
| F | Stockton Wharf ferry from Newcastle arrives | 10:35 | 12:55 | 14:50 | 16:50 |
| A | Stockton Wharf Mitchell Street | 10:42 | 13:00 | 15:00 | 17:00 |
| B | Griffith Street & Fullerton Street | 10:50 | 13:08 | 15:08 | 17:08 |
| C | Fern Bay Nelson Bay Road & Taylor Road | 10:53 | 13:11 | 15:11 | 17:11 |
| D | Bay Way Caravan Park | 10:55 | 13:13 | 15:13 | 17:13 |
| E | Seaside Village Seaside Boulevard | 10:58 | 13:16 | 15:16 | 17:16 |
| F | Newcastle Airport Terminus | 11:09 | 13:27 | 15:27 | 17:27 |
| G | South Street & Medowie Road | 11:18 | 13:36 | 15:36 | 17:36 |
| H | James Street & Boyd Boulevard | 11:23 | 13:41 | 15:41 | 17:41 |
| I | Federation Drive & Kindlebark Drive | 11:28 | 13:46 | 15:46 | 17:46 |
| J | Medowie Shops Ferodale Road | 11:35 | 13:53 | 15:53 | 17:53 |
| K | Richardson Road & Grahamstown Road | 11:43 | 14:01 | 16:01 | 18:01 |
| L | Lakeside Tavern Benjamin Lee Drive | 11:48 | 14:06 | 16:06 | 18:06 |
| M | Raymond Terrace Sturgeon Street | 11:54 | 14:12 | 16:12 | 18:12 |
| N | Raymond Terrace Market Place | 11:58 | 14:16 | 16:16 | 18:16 |



| Monday to Friday | | | | | | | | | | | |
|------------------|--|--------|---------|-------|--------|--------|--------|--------|--------|--------|--------|
| map ref | Route Number | 137 | 137 | 137 | 137 | 137 | 137 | 137 | 137 | 137 | 137 |
| N | Raymond Terrace Market Place | 06:21 | 07:32 | 07:49 | 08:30 | 10:22 | 11:57 | 14:14 | 15:26 | 16:29 | 17:43 |
| M | Raymond Terrace Sturgeon Street | 06:23 | 07:34 | 07:52 | 08:33 | 10:24 | 11:59 | 14:17 | 15:29 | 16:32 | 17:46 |
| L | Lakeside Tavern Benjamin Lee Drive | 06:29 | 07:40 | 07:58 | 08:39 | 10:30 | 12:05 | 14:23 | 15:35 | 16:38 | 17:52 |
| K | Richardson Road & Grahamstown Road | 06:34 | R07:45 | 08:03 | 08:44 | 10:35 | 12:10 | 14:28 | 15:40 | 16:43 | 17:57 |
| T | Waropara Road & Kula Road | 06:42 | ... | 08:11 | 08:52 | 10:43 | 12:18 | 14:36 | 15:48 | 16:51 | 18:05 |
| J | Medowie Shops Ferodale Road | 06:49 | ... | 08:18 | 08:59 | 10:50 | 12:25 | 14:43 | 15:55 | 16:58 | 18:12 |
| S | Medowie Road & Brocklesby Road | 06:57 | ... | 08:26 | 09:07 | 10:58 | 12:33 | 14:51 | 16:03 | 17:06 | 18:20 |
| R | Salt Ash Nelson Bay Rd & Richardson Rd | 07:04 | EP07:53 | 08:33 | E09:14 | E11:05 | E12:40 | E14:58 | E16:10 | E17:13 | E18:27 |
| Q | Tanilba Bay Shops | 07:23 | 08:11 | 08:52 | 09:33 | 11:24 | 12:59 | 15:17 | 16:29 | 17:32 | 18:46 |
| P | Mallabula Tanilba Road at Bay Street | N07:28 | ... | 08:57 | 09:38 | 11:29 | 13:04 | 15:22 | 16:34 | 17:37 | 18:51 |
| O | Lemon Tree Passage Shops | 07:36 | 08:17 | 09:05 | 09:46 | 11:37 | 13:12 | 15:30 | 16:42 | 17:45 | 18:59 |

| Saturday | | | | | | |
|----------|--|----------------|----------------|----------------|----------------|----------------|
| map ref | Route Number | 137 | 137 | 137 | 137 | 137 |
| N | Raymond Terrace Market Place | 08:28 | 10:28 | 12:55 | 14:58 | 17:43 |
| M | Raymond Terrace Sturgeon Street | 08:30 | 10:30 | 12:57 | 15:00 | 17:45 |
| L | Lakeside Tavern Benjamin Lee Drive | 08:36 | 10:36 | 13:03 | 15:06 | 17:51 |
| K | Richardson Road & Grahamstown Road | 08:41 | 10:41 | 13:08 | 15:11 | 17:56 |
| T | Waropara Road & Kula Road | 08:49 | 10:49 | 13:16 | 15:19 | 18:04 |
| J | Medowie Shops Ferodale Road | 08:56 | 10:56 | 13:23 | 15:26 | 18:11 |
| S | Medowie Road & Brocklesby Road | 09:04 | 11:04 | 13:31 | 15:34 | 18:19 |
| R | Salt Ash Nelson Bay Rd & Richardson Rd | E 09:11 | E 11:11 | E 13:38 | E 15:41 | E 18:26 |
| Q | Tanilba Bay Shops | 09:30 | 11:30 | 13:57 | 16:00 | 18:45 |
| P | Mallabula Tanilba Road at Bay Street | 09:35 | 11:35 | 14:02 | 16:05 | 18:50 |
| O | Lemon Tree Passage Shops | 09:43 | 11:43 | 14:10 | 16:13 | 18:58 |

| Sunday & Public Holidays | | | |
|--------------------------|--|----------------|----------------|
| map ref | Route Number | 137 | 137 |
| N | Raymond Terrace Market Place | 10:26 | 14:56 |
| M | Raymond Terrace Sturgeon Street | 10:28 | 14:58 |
| L | Lakeside Tavern Benjamin Lee Drive | 10:34 | 15:04 |
| K | Richardson Road & Grahamstown Road | 10:39 | 15:09 |
| T | Waropara Road & Kula Road | 10:47 | 15:17 |
| J | Medowie Shops Ferodale Road | 10:54 | 15:24 |
| S | Medowie Road & Brocklesby Road | 11:02 | 15:32 |
| R | Salt Ash Nelson Bay Rd & Richardson Rd | E 11:09 | E 15:39 |
| Q | Tanilba Bay Shops | 11:28 | 15:58 |
| P | Mallabula Tanilba Road at Bay Street | 11:33 | 16:03 |
| O | Lemon Tree Passage Shops | 11:41 | 16:11 |

| Monday to Friday | | | | | | | | | | | | |
|------------------|--|--------|----------|---------|--------|--------|--------|--------|---------|-------|-------|--------|
| | | | | | | | | | | | | |
| map ref | Route Number | 137 | 137 | 137 | 137 | 137 | 137 | 137 | 137 | 137 | 137 | 137 |
| O | Lemon Tree Passage Shops | M07:38 | S08:09 | H08:09 | 09:58 | 10:58 | 12:18 | H14:26 | S14:26 | 15:37 | 16:57 | 17:48 |
| P | Mallabula Tanilba Road at Bay Street | ... | S08:17 | H08:17 | 10:06 | 11:06 | 12:26 | H14:34 | S14:34 | 15:45 | 17:05 | 17:56 |
| Q | Tanilba Bay Shops | 07:46 | FS08:22 | H08:22 | 10:11 | 11:11 | 12:31 | H14:39 | S14:39 | 15:50 | 17:10 | 18:01 |
| R | Salt Ash Nelson Bay Rd & Richardson Rd | 08:05 | EGS08:50 | EH08:41 | E10:30 | E11:30 | E12:50 | H14:58 | S14:58 | 16:09 | 17:29 | E18:20 |
| S | Medowie Road & Brocklesby Road | ... | S08:57 | H08:48 | 10:37 | 11:37 | 12:57 | H15:05 | S15:05 | 16:16 | 17:36 | 18:27 |
| J | Medowie Shops Ferodale Road | ... | S09:05 | H08:56 | 10:45 | 11:45 | 13:05 | H15:13 | S15:13 | 16:24 | 17:44 | 18:35 |
| T | Waropara Road & Kula Road | ... | S09:12 | H09:03 | 10:52 | 11:52 | 13:12 | H15:20 | LS15:20 | 16:31 | 17:51 | 18:42 |
| K | Richardson Road & Grahamstown Road | ... | S09:20 | H09:11 | 11:00 | 12:00 | 13:20 | H15:28 | S15:32 | 16:39 | 17:59 | 18:50 |
| L | Lakeside Tavern Benjamin Lee Drive | ... | S09:25 | H09:16 | 11:05 | 12:05 | 13:25 | H15:33 | S15:37 | 16:44 | 18:04 | 18:55 |
| M | Raymond Terrace Sturgeon Street | ... | S09:31 | H09:22 | 11:11 | 12:11 | 13:31 | H15:39 | S15:43 | 16:50 | 18:10 | 19:01 |
| N | Raymond Terrace Market Place | ... | S09:35 | H09:26 | 11:15 | 12:15 | 13:35 | H15:43 | S15:47 | 16:54 | 18:14 | 19:05 |

| Saturday | | | | | | |
|----------|--|----------------|----------------|----------------|-------|-------|
| map ref | Route Number | 137 | 137 | 137 | 137 | 137 |
| O | Lemon Tree Passage Shops | 08:41 | 10:51 | 13:01 | 14:20 | 16:18 |
| P | Mallabula Tanilba Road at Bay Street | 08:49 | 10:59 | 13:09 | 14:28 | 16:26 |
| Q | Tanilba Bay Shops | 08:54 | 11:04 | 13:14 | 14:33 | 16:31 |
| R | Salt Ash Nelson Bay Rd & Richardson Rd | E 09:13 | E 11:23 | E 13:33 | 14:52 | 16:50 |
| S | Medowie Road & Brocklesby Road | 09:20 | 11:30 | 13:40 | 14:59 | 16:57 |
| J | Medowie Shops Ferodale Road | 09:28 | 11:38 | 13:48 | 15:07 | 17:05 |
| T | Waropara Road & Kula Road | 09:35 | 11:45 | 13:55 | 15:14 | 17:12 |
| K | Richardson Road & Grahamstown Road | 09:43 | 11:53 | 14:03 | 15:22 | 17:20 |
| L | Lakeside Tavern Benjamin Lee Drive | 09:48 | 11:58 | 14:08 | 15:27 | 17:25 |
| M | Raymond Terrace Sturgeon Street | 09:54 | 12:04 | 14:14 | 15:33 | 17:31 |
| N | Raymond Terrace Market Place | 09:58 | 12:08 | 14:18 | 15:37 | 17:35 |

| Sunday & Public Holidays | | | |
|--------------------------|--|----------------|----------------|
| map ref | Route Number | 137 | 137 |
| O | Lemon Tree Passage Shops | 08:39 | 12:59 |
| P | Mallabula Tanilba Road at Bay Street | 08:47 | 13:07 |
| Q | Tanilba Bay Shops | 08:52 | 13:12 |
| R | Salt Ash Nelson Bay Rd & Richardson Rd | E 09:11 | E 13:31 |
| S | Medowie Road & Brocklesby Road | 09:18 | 13:38 |
| J | Medowie Shops Ferodale Road | 09:26 | 13:46 |
| T | Waropara Road & Kula Road | 09:33 | 13:53 |
| K | Richardson Road & Grahamstown Road | 09:41 | 14:01 |
| L | Lakeside Tavern Benjamin Lee Drive | 09:46 | 14:06 |
| M | Raymond Terrace Sturgeon Street | 09:52 | 14:12 |
| N | Raymond Terrace Market Place | 09:56 | 14:16 |



| Monday to Friday | | | | | |
|------------------|--|--------|--------|--------|-------|
| map ref | Route Number | 138 | 138 | 138 | 138 |
| V | Newcastle Bus Terminus Watt Street | ... | ... SW | 15:10 | 17:10 |
| U | Mayfield Shops Maitland Road | T12:36 | T14:30 | S15:45 | 17:28 |
| C | Fern Bay Nelson Bay Road & Taylor Road | 12:54 | 14:48 | S15:57 | 17:40 |
| D | Bay Way Caravan Park | Y12:56 | Y14:50 | ... | ... |
| F | Newcastle Airport Terminus | ... | ... | S16:09 | 17:52 |
| R | Salt Ash Nelson Bay Road & Richardson Road | ... | ... | S16:20 | 18:03 |
| Q | Tanilba Bay Shops | ... | ... | S16:39 | 18:22 |
| P | Mallabula Tanilba Road at Bay Street | ... | ... | S16:44 | 18:27 |
| O | Lemon Tree Passage Shops | ... | ... | S16:52 | 18:35 |

| Monday to Friday | | | | | |
|------------------|--|-------|---------|--------|--------|
| map ref | Route Number | 138 | 138 | 138 | 138 |
| O | Lemon Tree Passage Shops | 06:35 | S06:48 | ... | ... |
| P | Mallabula Tanilba Road at Bay Street | 06:43 | S06:55 | ... | ... |
| Q | Tanilba Bay Shops | 06:48 | S07:02 | ... | ... |
| R | Salt Ash Nelson Bay Road & Richardson Road | 07:07 | S07:24 | ... | ... |
| F | Newcastle Airport Terminus | 07:18 | S07:36 | ... | ... |
| D | Bay Way Caravan Park | 07:28 | S07:50 | Y09:26 | Y11:26 |
| C | Fern Bay Nelson Bay Road & Taylor Road | 07:30 | S07:52 | 09:28 | 11:28 |
| U | Mayfield Shops Maitland Road | 07:42 | KS08:06 | U09:46 | U11:46 |
| V | Newcastle Bus Terminus Watt Street | 08:00 | S08:34 | ... | ... |

Explanation of definitions and symbols

- A** From Nelson Bay Rd, L Vardon Rd, R Rankin Rd, L Nelson Bay Rd.
- B** Enters Bayway on request only.
- C** Via Fullerton, L Griffiths Ave, R Dunbar, R Flint St, L Douglas St, R Hereford St, L Roxburgh St, R Monmouth St, L Lamond St, L Clyde St, L Roxburgh, R Monmouth St via route to Ferry Wharf.
- D** School Days Only - School Diversion.
- E** Bus connects with Route 130 for travel to/from Newcastle.
- F** SCHOOL DAYS ONLY - Divert via Lemon Tree Passage Rd, L Brown, L Lemon Tree Passage, R Rookes R Lemon Tree Passage, R Michael, L Chris, R Francene, R Tonia, R Michael, R Lemon Tree Passage.
- G** SCHOOL DAYS ONLY - Divert Salt Ash Ave into Salt Ash PS.
- H** Operates School Holidays Only.
- K** Hanbury St, Turton Rd, Belford, Tudor, R Parkway, Parkway, L Union, R Hunter, Scott to Newcastle Station.
- L** School diversion via Waropara, L Ferodale, R Abundance, R Lisadell - School Days Only.
- M** Does not Divert via Mallabula loop - L Gould, R Elaine, R Kenneth, L Lemon Tree Passage Rd, R President Wilson Walk, L Clemenceau, L Poilus, R Avenue of the Allies, R Lemon Tree Passage Rd.
- N** SCHOOL DAYS ONLY - Diverts via Meridith, L Russell, Marine, L Francis, R Morton, Cook, R Meridith.
- P** Diverts via Oyster Cove then to Tanilba Bay Shops via L Poilus, R Clemenceau, R President Wilson Walk.
- R** Bus runs express from this point to Salt Ash, not via Medowie.
- S** Operates School Days Only.
- T** Divert via Maitland Rd, L Ingall, L Industrial, R Tourle.
- U** Divert via Industrial, R Ingall, R Maitland Rd.
- W** Bus diverts to Newcastle schools via Hunter St, L) National Park, R) Parkway, L) Tudor, L) Chatham, R) Polkolbin, R) Awaba, R) Bruncker, L) Lambton, R) Turton, R) Station, R) Platt, L) Railway, R) Hanbury, R) Sunderland, L) Roe, L) Maitland Rd.
- Y** Board/Alight inside Bayway Village
- ...** Bus does not operate past this timing point.

Timing Points

- A** Stockton Wharf Mitchell Street
- B** Griffith Street & Fullerton Street
- C** Fern Bay Nelson Bay Road & Taylor Road
- D** Bay Way Caravan Park
- E** Seaside Village Seaside Boulevard
- F** Newcastle Airport Terminus
- G** South Street & Medowie Road
- H** James Street & Boyd Boulevard
- I** Federation Drive & Kindlebark Drive
- J** Medowie Shops Ferodale Road
- K** Richardson Road & Grahamstown Road
- L** Lakeside Tavern Benjamin Lee Drive
- M** Raymond Terrace Surgeon Street
- N** Raymond Terrace Market Place
- O** Lemon Tree Passage Shops
- P** Mallabula Tanilba Road at Bay Street
- Q** Tanilba Bay Shops
- R** Salt Ash Nelson Bay Rd & Richardson Rd
- S** Medowie Road & Brocklesby Road
- T** Waropara Road & Kula Road